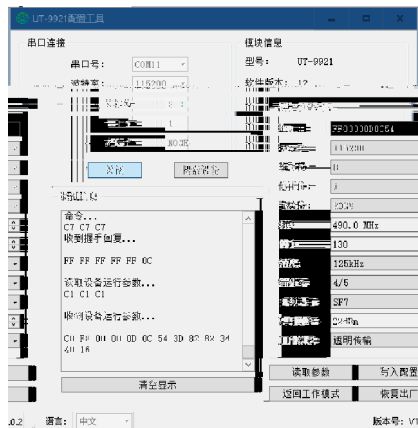
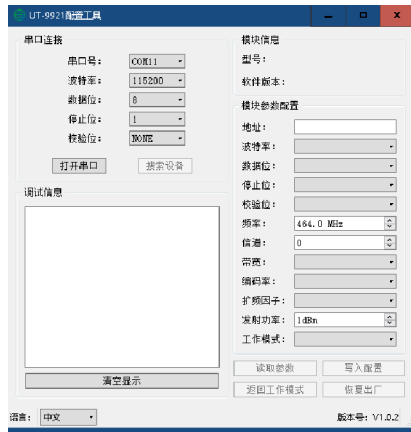


六、LoRa配置

6.1

LoRa LoRa

1 UT-9921_V1.0.2.exe
<https://www.szutek.com/show-968.html>



1 1200~115200bps
 2
 3 464~515MHz 490MHz 490MHz
 470~510MHz
 LoRa
 4
 5 125~500KHz
 6 4/5~4/8
 7 SF5~SF12
 8 1-22dBm
 9 /
 9 1

Reset

c1c1c1 2 7
 10
 Eg C0 FF 00 00 03 0A 53 3D 82 82 B4 40 16
 FF 00 00 03 0A 53
 82
 Eg FF 00 00 03 0A 53 82 31323334353637383930
 FF 00 00 03 0A 53 0x82
 31323334353637383930 200

6.2

1 LoRa
 2

七、使用步骤

1 LoRa
 2 LoRa
 3 470~510MHz LoRa PWR
 4 LoRa RS-232/485/422
 LoRa