

UT-7884

RS-485/422mini PCI-E

: _____

: _____

UT-7884

RS-485/422mini PCI-E

1.

- UTEK
-
- Logo 

2.

- UT-7884
- VER: 01

3.

- RS-485/422mini PCI-E

4.

1. 25T-9AB
X1 2.5Gbps PCI Express

RS-422 T/R+ T/R- RXD+ RXD- GND

RS-485 Data+(A) Data-(B) GND

300bps-921.6Kbps

8

1.5 2

None Even odd Space Mark

RTS/CTS XON/XOFF

-40 85

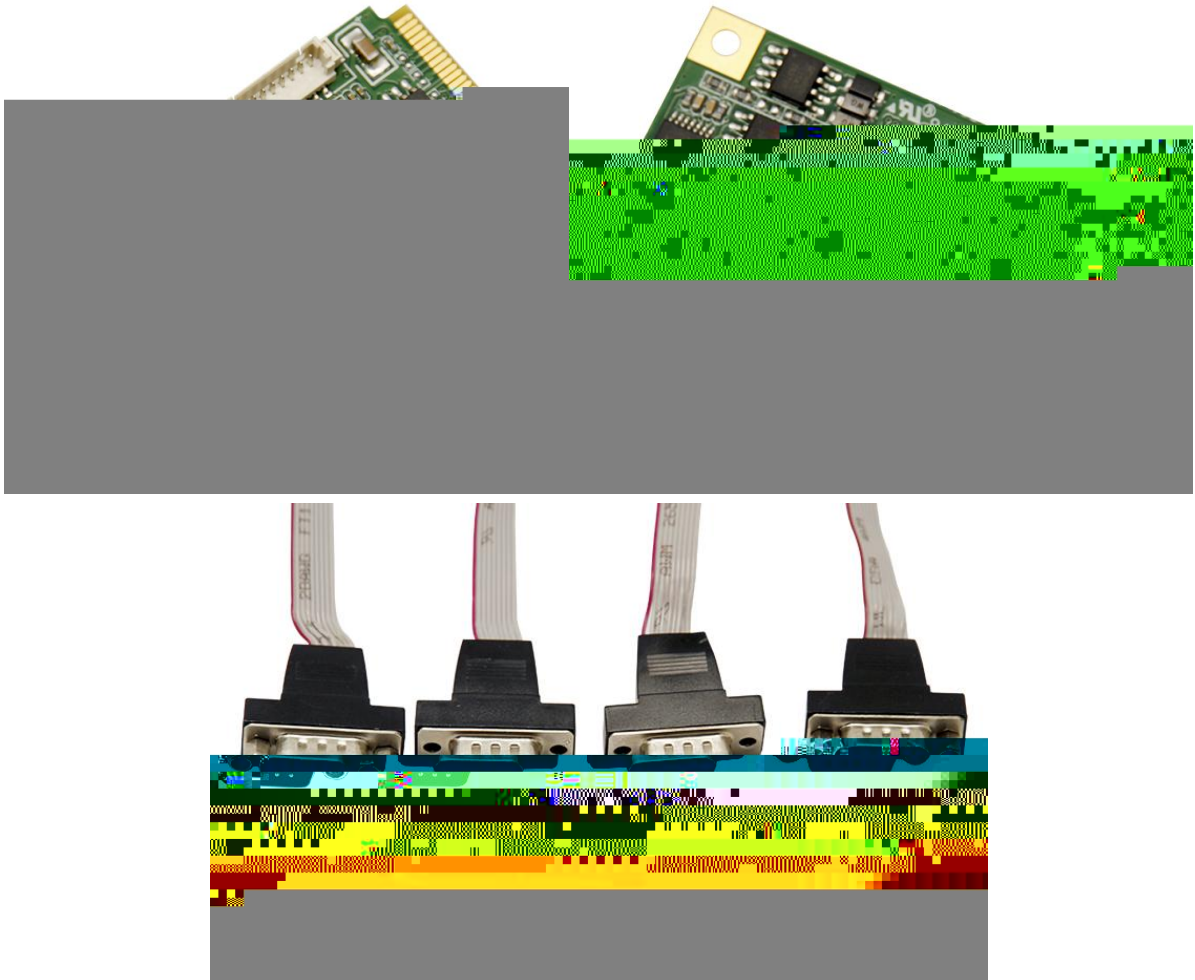
Win2000/XP/Vista/Win7/8/8.1/NT4.0/CE 4.2/5.0/

6.0/Vxworks/Linux 2.4.x/2.6.x

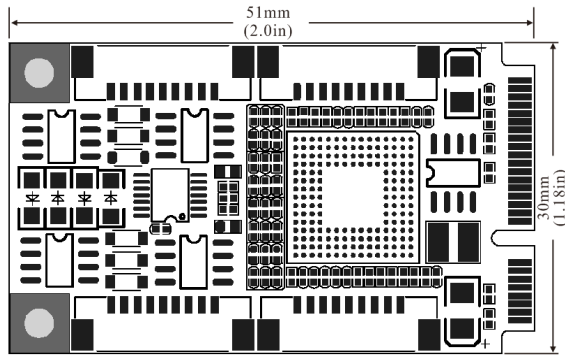
1、DB9针型：RS-485/RS-422输出信号引脚分配(Port1-Port4)

DB9 针型 (PIN)	输出信号	RS-422全双工接线	RS-485半双工接线
1	T/R+	发(A+)	RS-485 (A+)
2	T/R-	发(B-)	RS-485 (B-)
3	RXD+	收(A+)	空
4	RXD-	收(B-)	空
5	GND	地线	地线
6	NC		

5.



6.



7.

8.

UT-7884	1PCS
	1PCS
	1PCS
/DB9	1PCS



180×138×40mm

9.

-40 +85 , 5% 95%

10.

11.

12.