



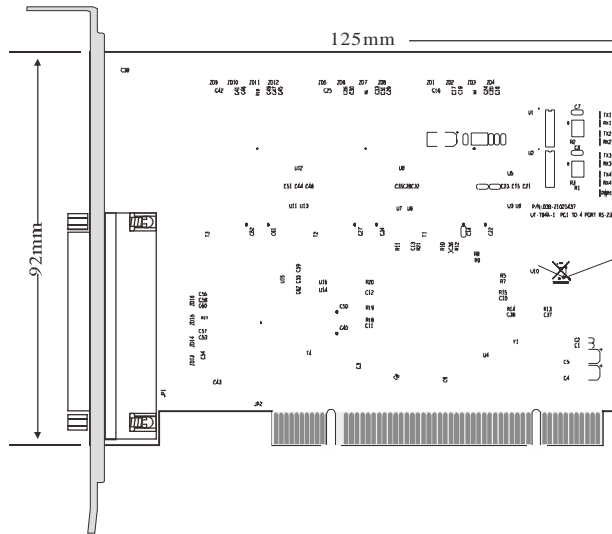
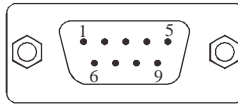
UT-764A-I

4 RS-232 PCI

1 DB9 RS-232C (Port1-Port4)

| DB9 (PIN) | RS-232C    |
|-----------|------------|
| 1         | N/C        |
| 2         | SIN (RXD)  |
| 3         | SOUT (TXD) |
| 4         | N/C        |
| 5         | GND        |
| 6         | N/C        |
| 7         | RTS        |
| 8         | CTS        |
| 9         | N/C        |

DB9



- 1 A PCI
- B RS-232C
- C
- D
- E
- F

- 2 A

M O M O



M O M O XP

Win2KXP

M O



DR44 1  
32 bit Universal PCI

RS-232 RXD TXD GND RTS CTS  
300bps-921.6Kbps  
5 6 7 8  
1 1.5 2  
None Even odd Space Mark  
RTS/CTS XON/XOFF  
Z40 ~85  
2500Vrms 500DC DC/DC  
RS-232 600W 15KV  
8KV

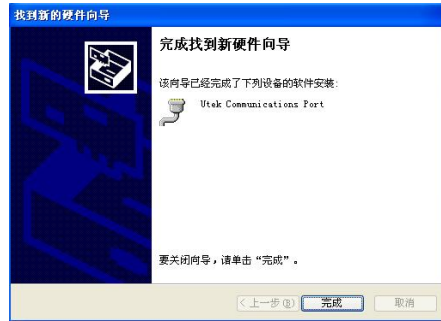
Win2000/2003/XP/Vista/2003\_Server/Win7/8/8.1/10/  
NT4.0/CE 4.2/5.0/6.0/Vxworks/Linux 2.4.x/2.6.x

RS-232 921.6Kbps, 64byteFIFO  
PCI 3.3/5V PCI PCI-X

M O



M O



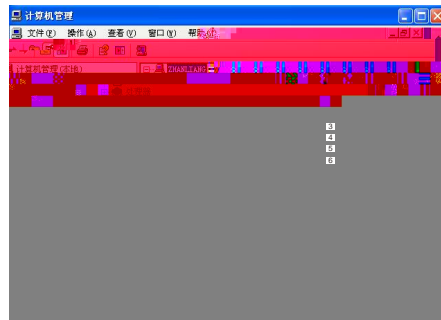
4

M O M O

%



COM  
COM 3 4 5 6, UT-764A-I



M

O M O

M O  
Win2KXP  
M O

XP

