

UT-6816CN



WEB

V1.0

.....	2
.....	4
1	5
1.1	
1.2	
2	6
2.1	
2.2	
2.3	
3 Web	7
3.1 Web	
3.2 Web	
4	8
4.1	
4.2	
4.3	
4.3.1 VCOM	
4.3.2 TCP Server	
4.3.3 TCP Client	
4.3.4 UDP Client	
4.3.5 Modbus Server	
4.3.6 Modbus Client	
4.3.7 MCP	
4.4	
4.5	
4.6	
4.7	
4.8	
4.9	
5	23
6 Vcom	25
6.1 remote devices Management	
6.1.1	
6.1.2	

- 6.1.3
- 6.1.4
- 6.1.5 IP
- 6.1.6
- 6.1.7
- 6.1.8
- 6.1.9
- 6.1.10
- 6.2 COM Mapping
 - 6.2.1
 - 6.2.2
 - 6.2.3
 - 6.2.4
 - 6.2.5
 - 6.2.6
 - 6.2.7
- 6.3 Options
- 6.4 About
- 6.5 Exit

Web

GUI	
	
	

1

1.1

UT-6816CN RISC-V
TCP/IP TCP/IP
RS-232/485/422 TCP/IP
ARP IP TCP HTTP ICMP UDP

1.2

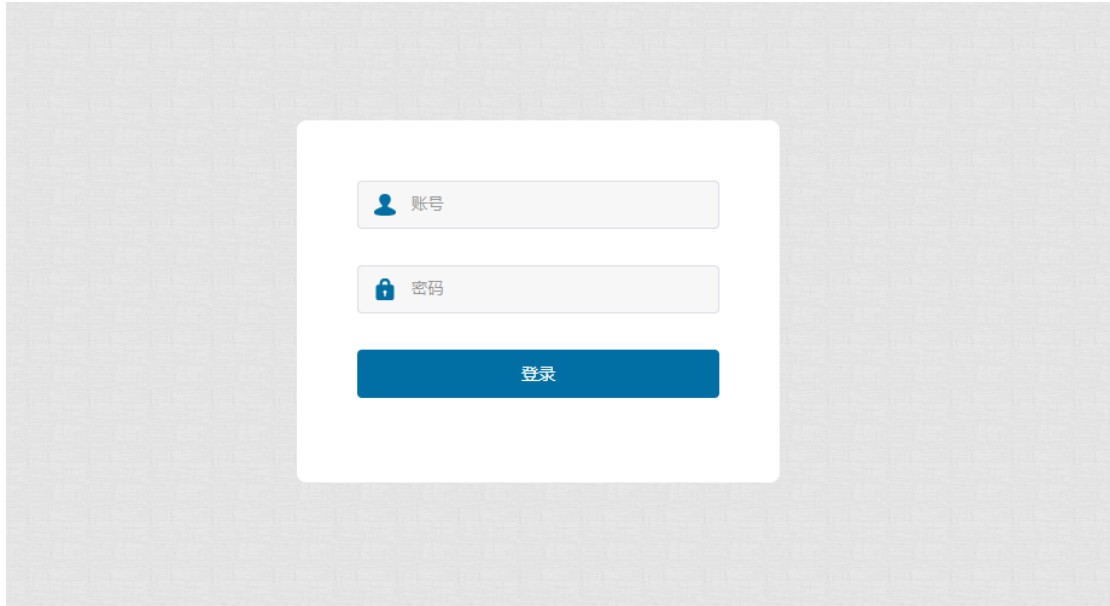
100-240VAC
RS232\RS485\RS422
2 10/100M IP MAC
Reset
300-921600bps
MCP VCOM
ARP IP ICMP UDP TCP HTTP DHCP MODBUS
TCP Server TCP/UDP Client MCP&VCOM Modbus Server/Client

-40 ~85
WEB
Web VistaComs

3 Web

3.1 Web

	Web		IP
1	IP 192.168.0.125	2	IP 192.168.1.125
		admin	admin



PC

IP

3.2 Web

Web

		IP	DHCP
	IP	IP	WEB

4

4.1

1.

The screenshot displays the 'Network Settings' (网口设置) page. On the left is a navigation menu with options like 'Network Settings', 'Serial Port Settings', 'Mode Settings', 'System Status', 'System Management', 'Security Settings', and 'User Settings'. The main content area is titled 'Network Settings' and includes a 'Select Network Port' section with radio buttons for ports 1 and 2. Below this is the 'Network Parameters' section with input fields for:

- Device Model: UT-6816-CN
- IP Address: 192.168.0.125
- MAC Address: 90.7E.BA.01.CD.11
- Subnet Mask: 255.255.255.0
- Gateway: 192.168.0.1
- DNS Service 1: 114.114.114.114
- DNS Service 2: 8.8.8.8
- Network Speed: Auto Negotiation
- DHCP: Disabled

 At the bottom right, there are 'Cancel' and 'Save' buttons.

2.

IP		IP
MAC		
DNS	1	DNS
DNS	2	DNS
DHCP		DHCP IP , disable

3.

		" "
		" "

4.2

1.

服务设置

串口设置

模式设置

系统状态

系统管理

安全设置

用户设置

系统日志

保存设置

串口设置

选择串口

串口: 1 2 3 4 5 6 7 8
 9 10 11 12 13 14 15 16

串口参数

接口类型:

波特率:

数据位:

停止位:

校验位:

流控制:

发送间隔: (0-65535, 0 关闭此功能)

打包长度: (0-1024Byte)

应用选项

应用到所有串口:

2.

	RS232/RS485/RS422
	300~921600
	5/6/7/8
	1/1.5/2
	Odd/Even/Mark/Space
	None RTS/CTS

3.

	" "
	" "

4.3

4.3.1 VCOM

1.

TCP/IP

windows
COM COM
COM COM256

2.

	VCOM

3.

	" "
	VCOM " "

4.

1 VCOM Utility " " " "

编号	类型	IP地址	端口	通讯端口	连接状态
1	8 ports	192.168.1.124	1	COM2	未启用
2	8 ports	192.168.1.124	2	COM3	未启用
3	8 ports	192.168.1.124	3	COM9	未启用
4	8 ports	192.168.1.124	4	COM10	未启用
5	8 ports	192.168.1.124	5	COM11	未启用
6	8 ports	192.168.1.124	6	COM12	未启用
7	8 ports	192.168.1.124	7	COM13	未启用
8	8 ports	192.168.1.124	8	COM18	未启用

2

The image displays two side-by-side screenshots of the VCOM software interface. Each window is titled '串口连接' (Serial Port Connection) and '数据显示' (Data Display). The left window is configured for COM2, and the right window is configured for COM5. Both windows show the same configuration parameters: Baud Rate (波特率) set to 115200, Parity (校验位) set to None (无校验), Data Bits (数据位) set to 8, and Stop Bits (停止位) set to 1. The 'Data Display' area in both windows shows the received data '0123456789abe!!!'. The status bar at the bottom of each window indicates 'TX: 16' and 'RX: 16'.

4.3.2 TCP Server

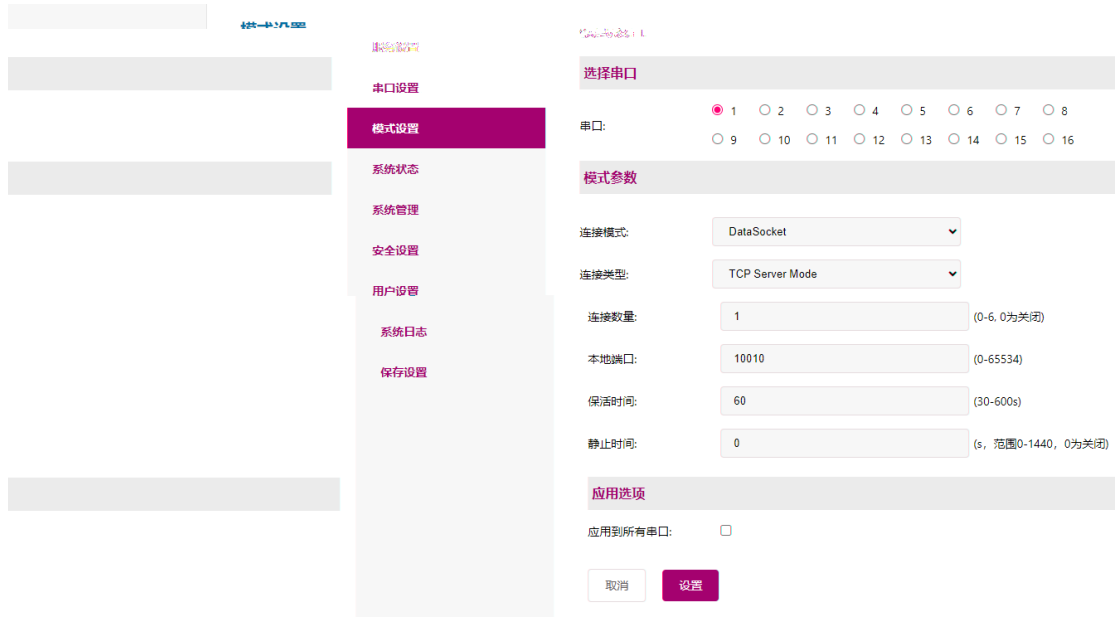
1.

TCP

IP

TCP

8



2.

	DataSocket

服务设置

串口设置

模式设置

系统状态

系统管理

安全设置

用户设置

系统日志

保存设置

模式设置

选择串口

串口: 1 2 3 4 5 6 7 8

9 10 11 12 13 14 15 16

模式参数

连接模式: DataSocket

连接类型: TCP Client Mode

连接数量: 1 (0-6, 0为关闭)

保活时间: 60 (30-600s)

静止时间: 0 (s, 范围0-1440, 0为关闭)

心跳包使能: 网络心跳包

心跳包时间: 300 (1-65535s)

心跳包编码: ASCII

心跳包内容: Heartbeat

注册包类型: MAC注册包

注册包位置: 连接发送

增加

远程IP 1

远程IP 2

远程IP 3

远程IP 4

远程IP 5

远程IP 6

类型	远程IP	本地端口 (若为0或冲突, 则由系统自动分配)	远程端口	操作
TCP Server	0.0.0.0	10010	510	删除
	0.0.0.0	10011	510	删除
	0.0.0.0	10012	510	删除
	0.0.0.0	10013	510	删除
	0.0.0.0	10014	510	删除
	0.0.0.0	10015	510	删除

应用选项

应用到所有串口:

2.

	DataSocket
	TCP Client Mode
	0-6
	0
	1-65535s
	Ascii Hex
	MAC MAC

	Ascii Hex
IP/	IP

3.

	" "
	DataSocket TCP Client Mode
	IP " "

4.3.4 UDP Client

1.

UDP

IP	IP
----	----

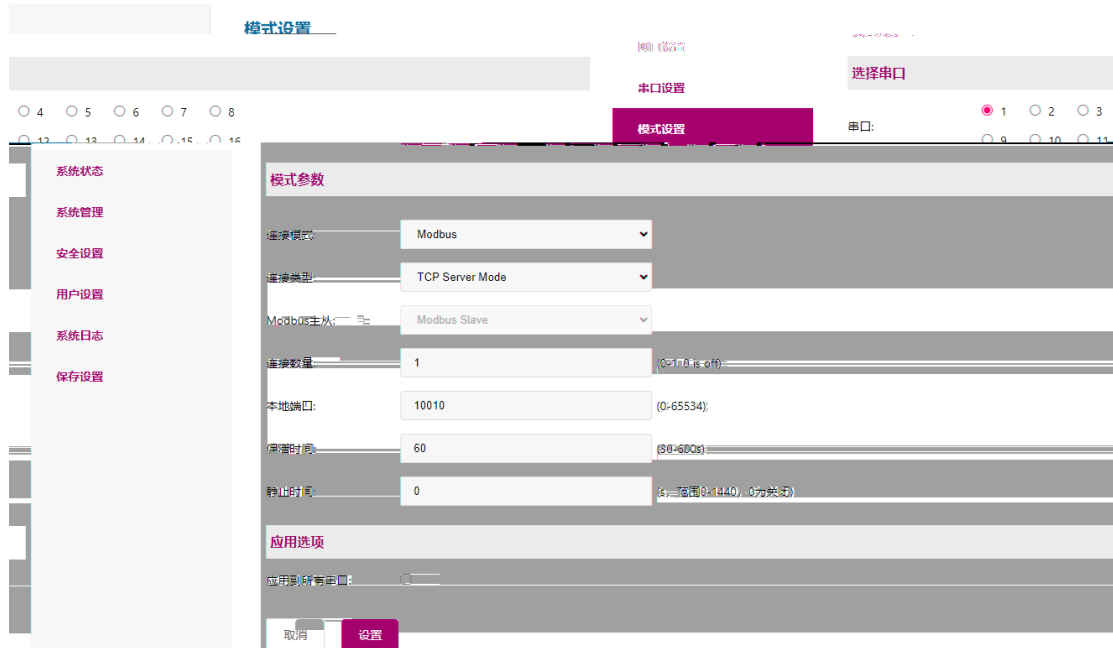
3.

	"	"
	DataSocket	UDP Client Mode
	IP	" "

4.3.5 Modbus Server

1.

Modbus



2.

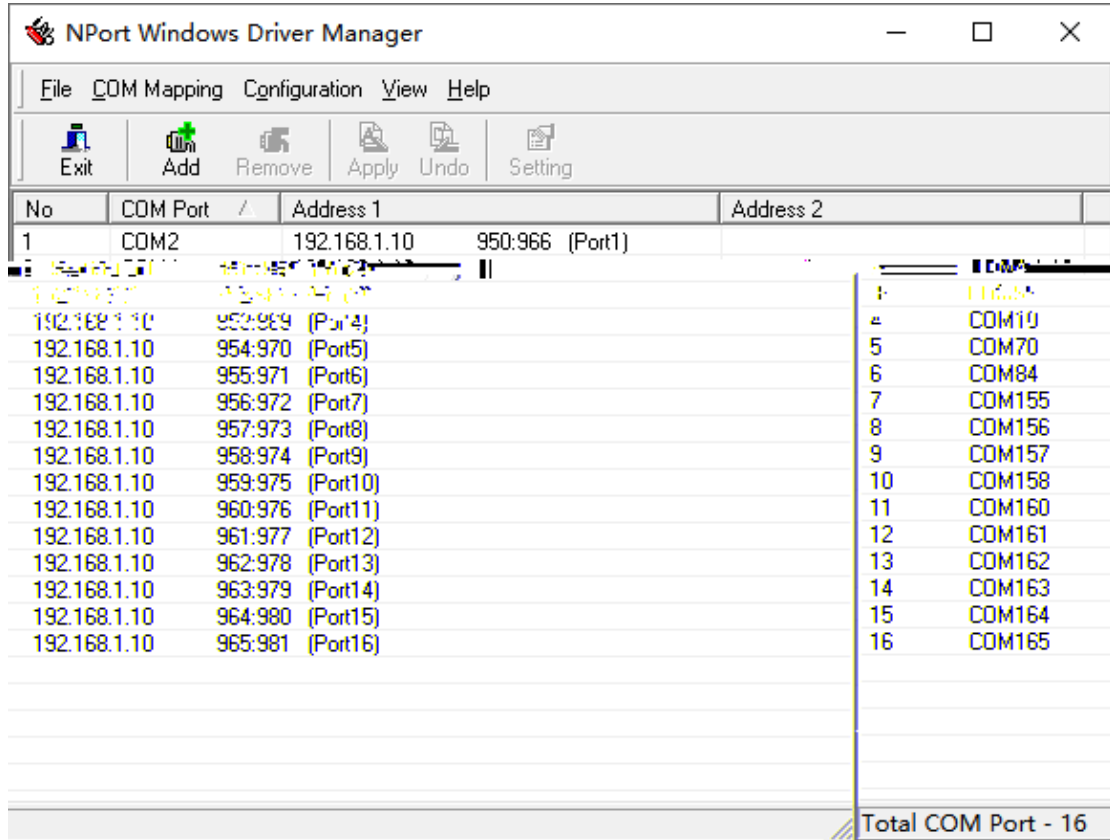
	Modbus
	TCP Server Mode
	1
	0

3.

	"	"
	Modbus	TCP Server Mode
	"	"



2.



2



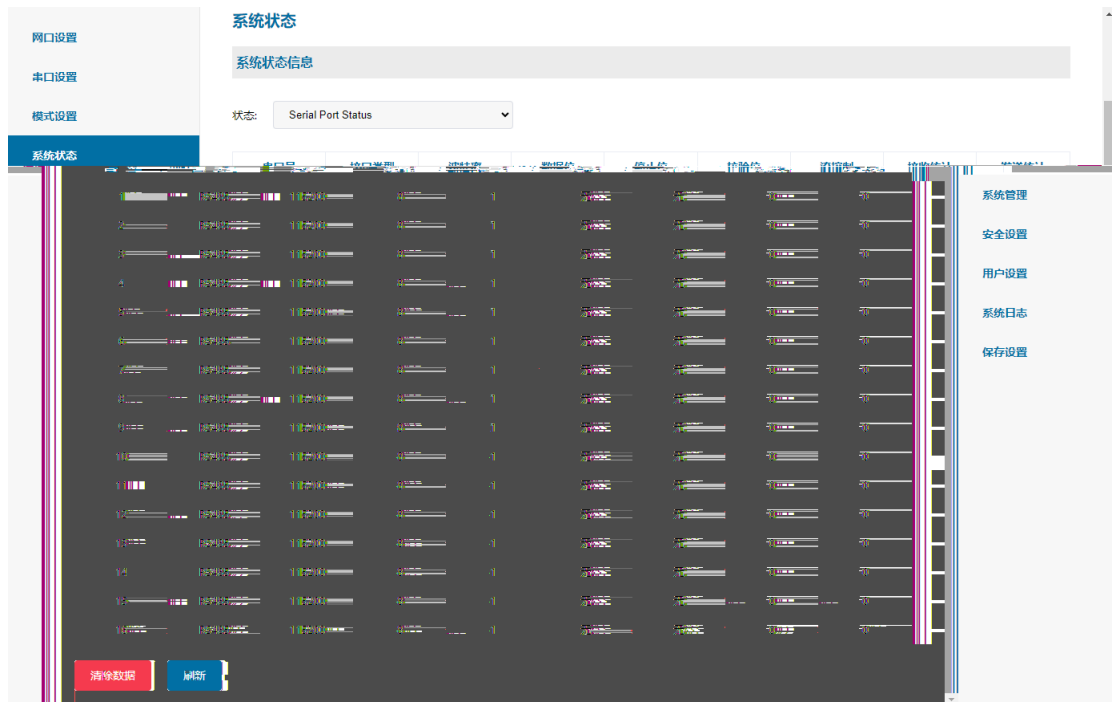
4.4

1.

Network Status



Serial Port Status



4.5

1.

2.

4.8

1.

2.

LWIP	
LWIP	
	console
	UDP UDP IP
	1

4.9

1.



服务设置

串口设置

模式设置

系统状态

系统管理

安全设置

用户设置

系统日志

保存设置

保存设置

保存并重启

请检查所有设置选项，点击重启按钮后生效

重启

5

a) search

1 , () ,
2 ,LAN ,ACT(10M , ,100M)
3 ()
4 , IP : ,
5 , console IP

b)

1 , ping
2
3 VCOM mode " VCOM Utility"
4 COM

c)

1
2
3 ,

d)

1 " reset" 5

e)

1 , 485 1A+ 2B-
2 ()
3
4 , ,
5 " Port Configure"

f)

1 IP PC IE
2 DNS

g)

1 PC IE

1 [] [] MODEM
MODEM RTS/CTS

2 MODEM DCE

i TCP server

1 PC []
] [TCP]

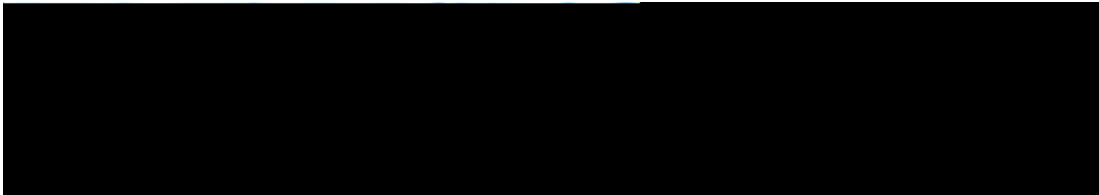
2 [] [] [none]

6 Vcom

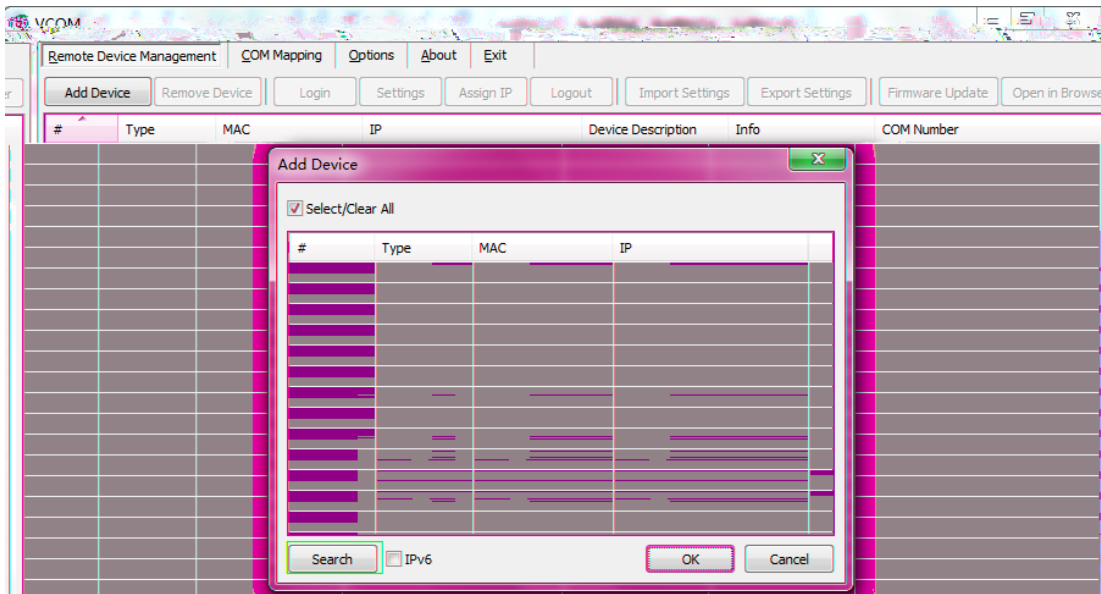
6.1 remote devices Management

6.1.1

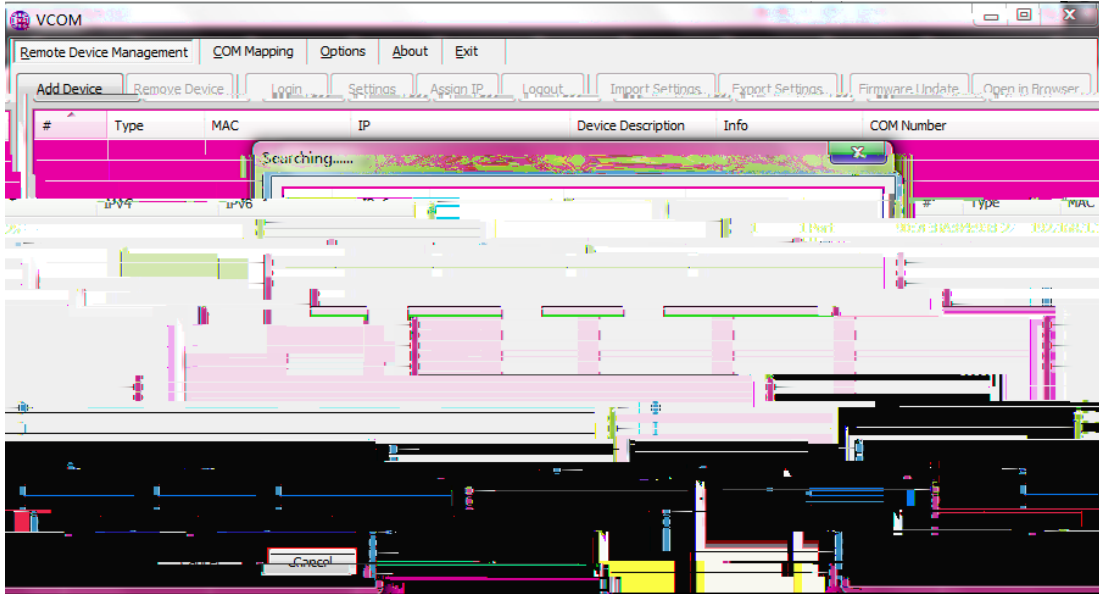
		" VCOM"	1	remote devices Management
— Add Device		IP	2	" Search"
		IP	3	3
" cancel"	2	" ok"	VCOM	4



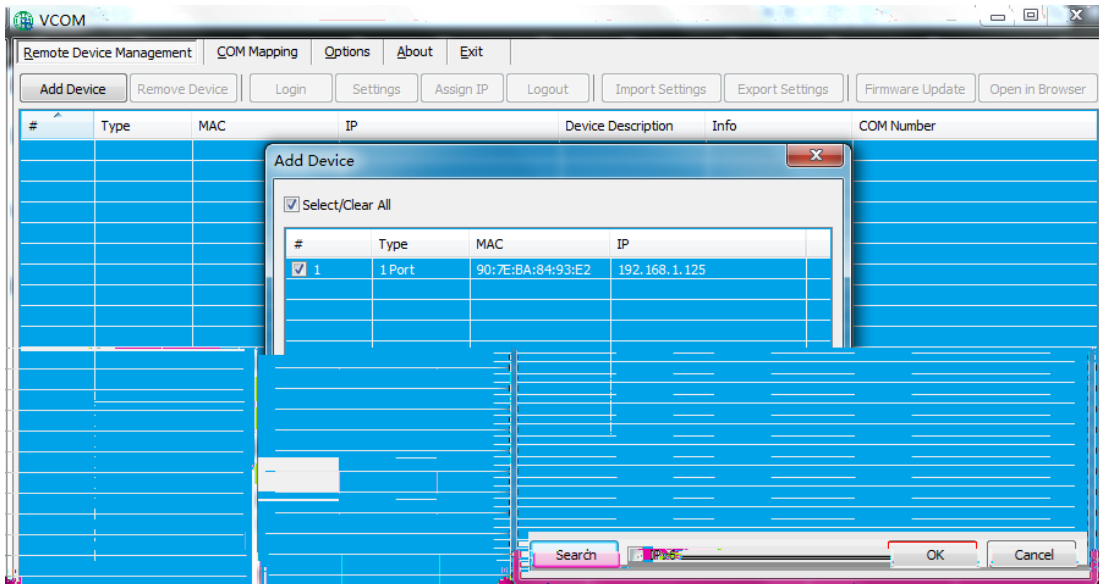
1



2



3



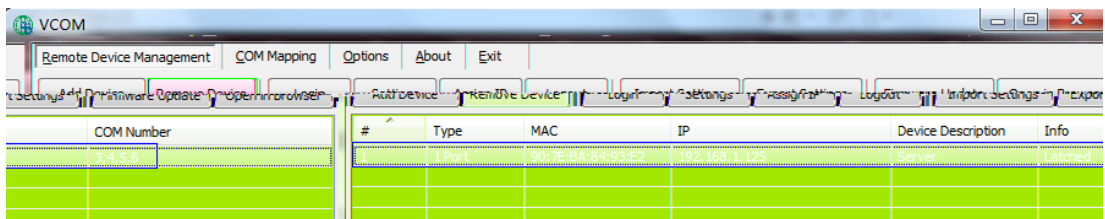
4

6.1.2

“ VCOM”

remote devices Management

“ Remove Devide”

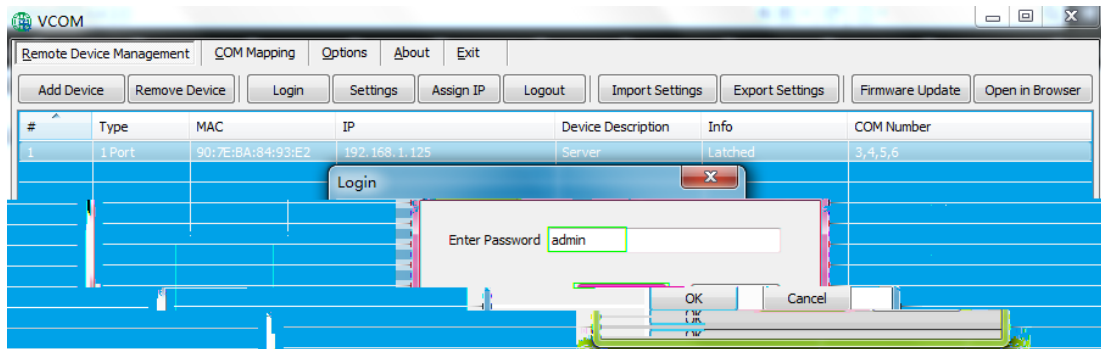


6.1.3

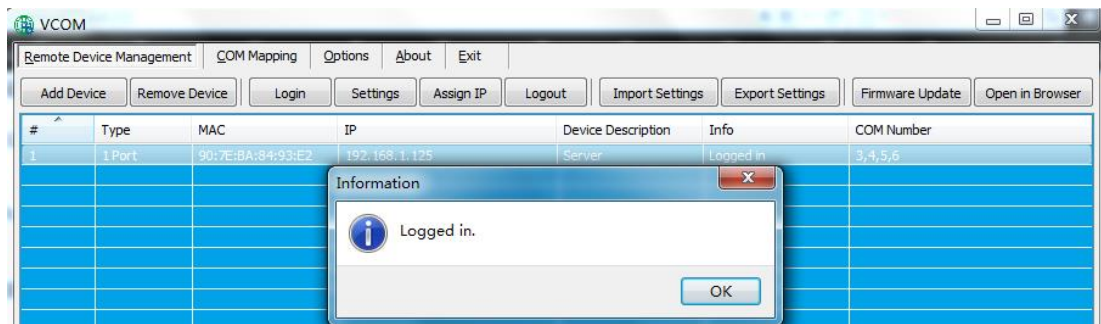
" VCOM"
1

remote devices Management

" Login"
2



1

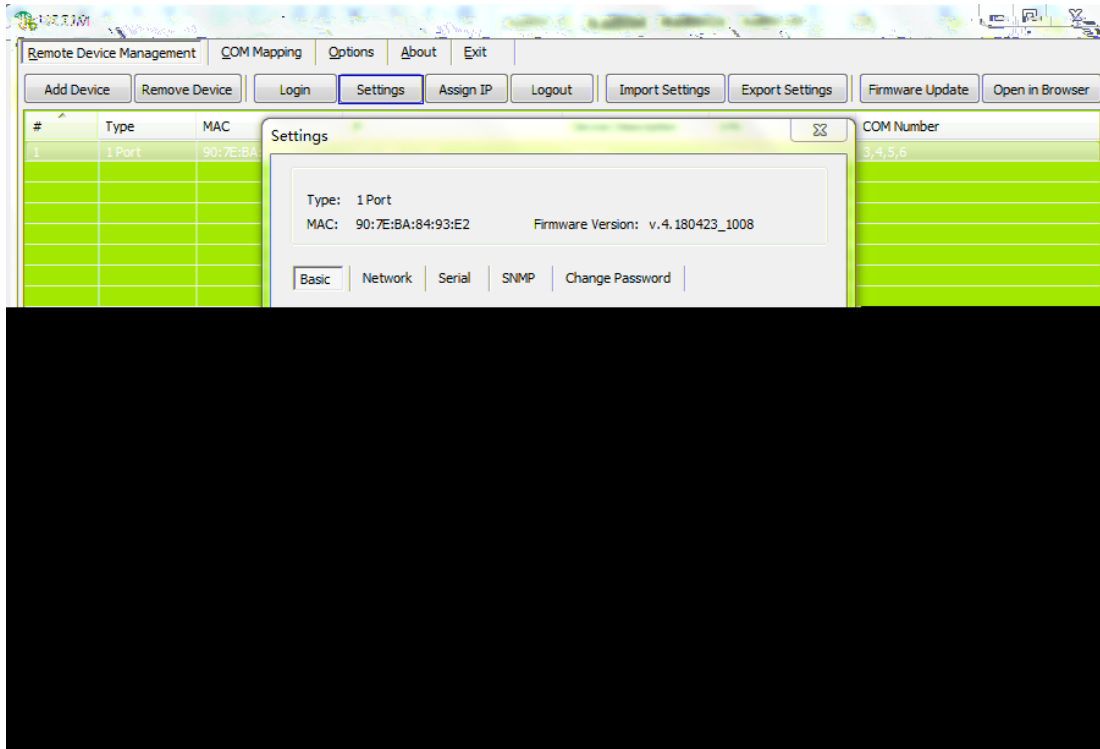


2

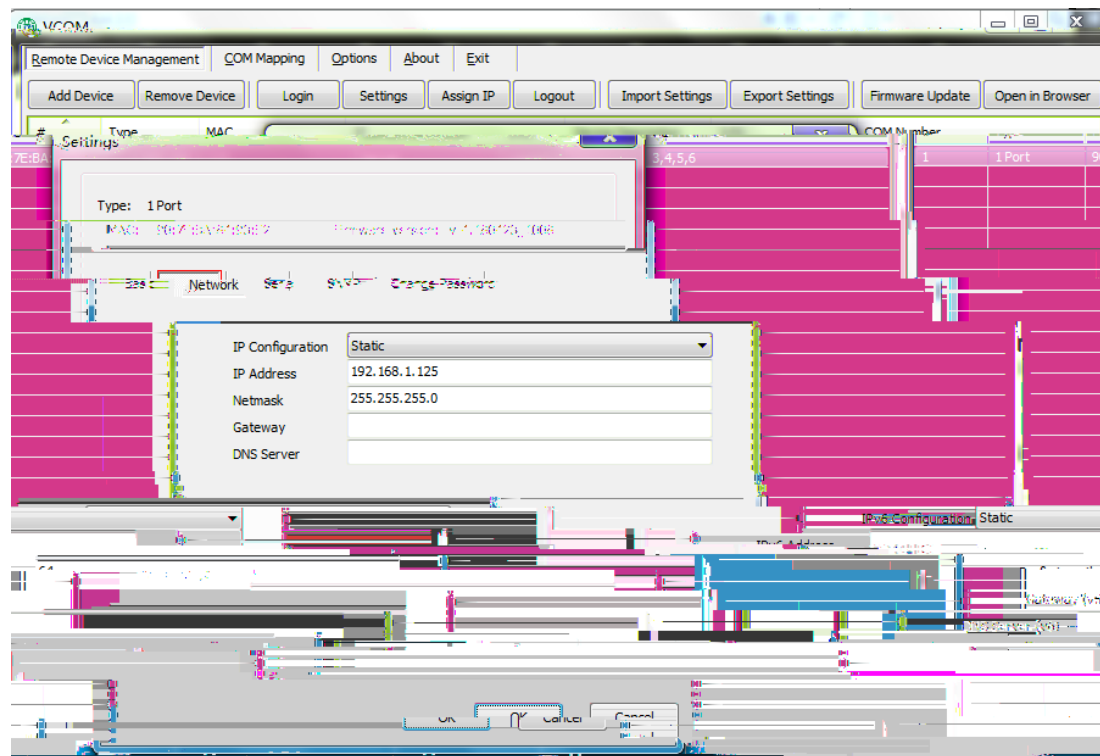
6.1.4

" Setting"

6.1.4.1 Basic

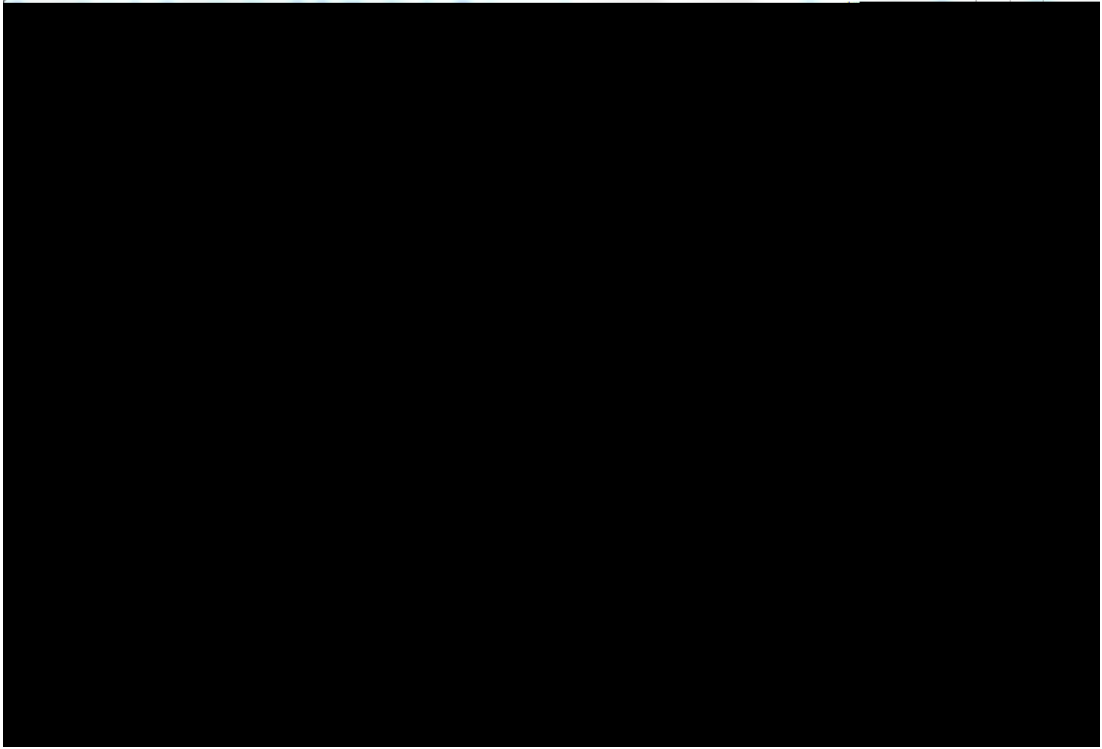


6.1.4.2 Network IP

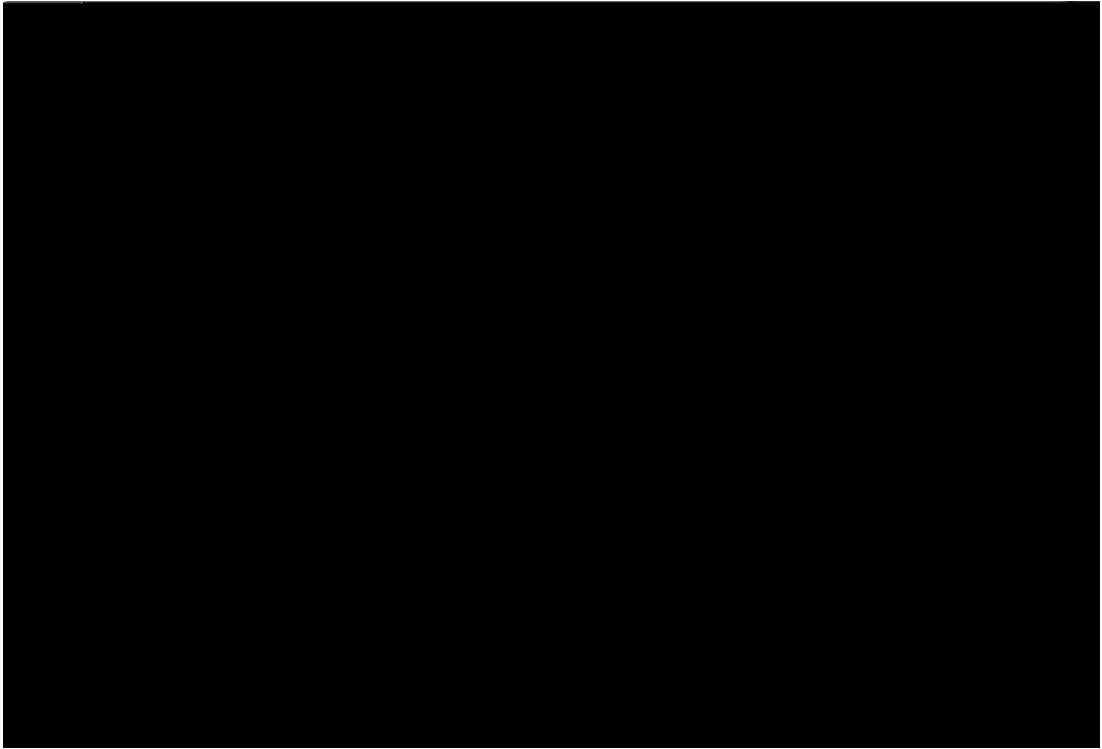


6.1.4.3 Serial

- 1 " Settings"
- 2 " Configure"



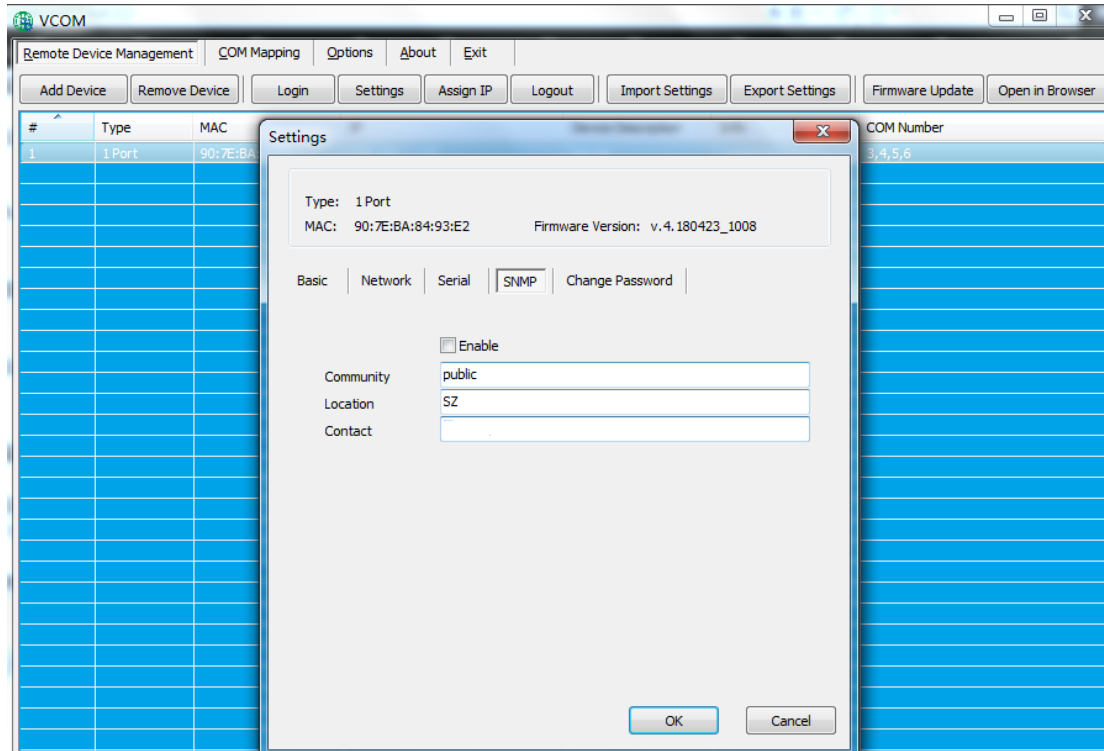
1



2

6.1.4.4 SNMP

SNMP

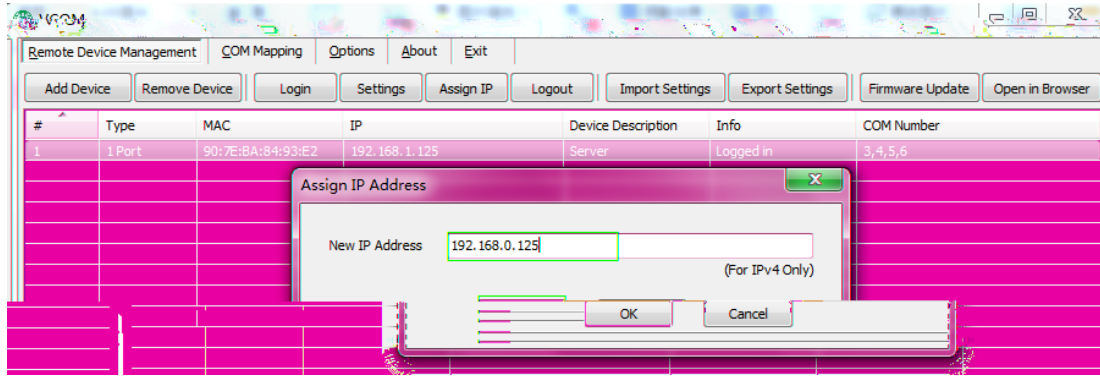


6.1.4.5 Change Password



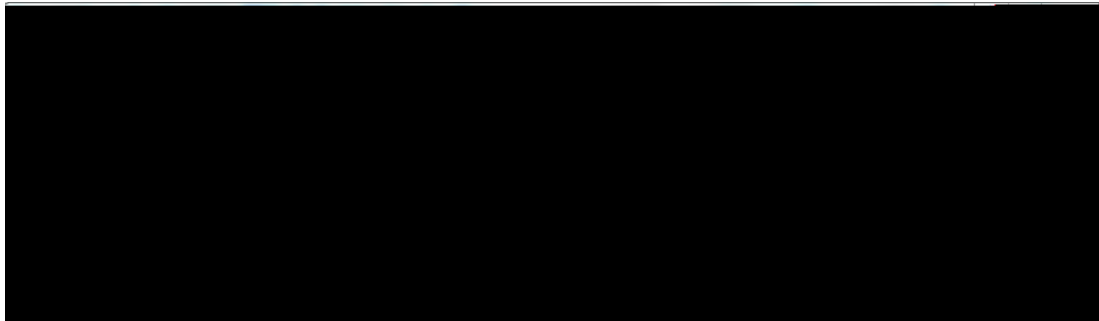
6.1.5 IP

" VCOM" remote devices Management " Assign IP"
 IP (IP login)



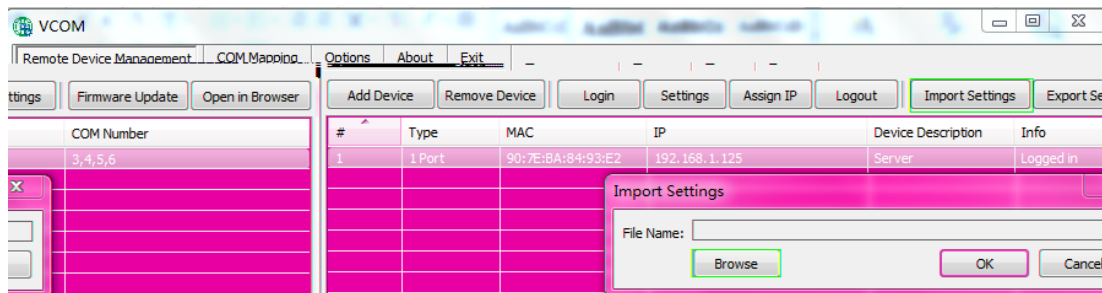
6.1.6

" VCOM" remote devices Management " Logout"

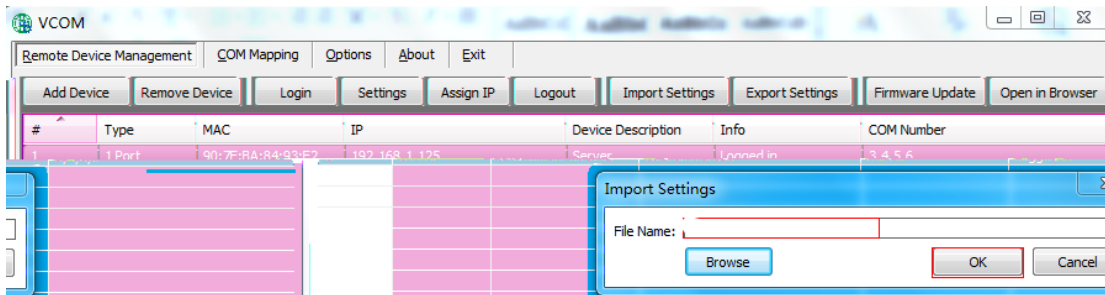


6.1.7

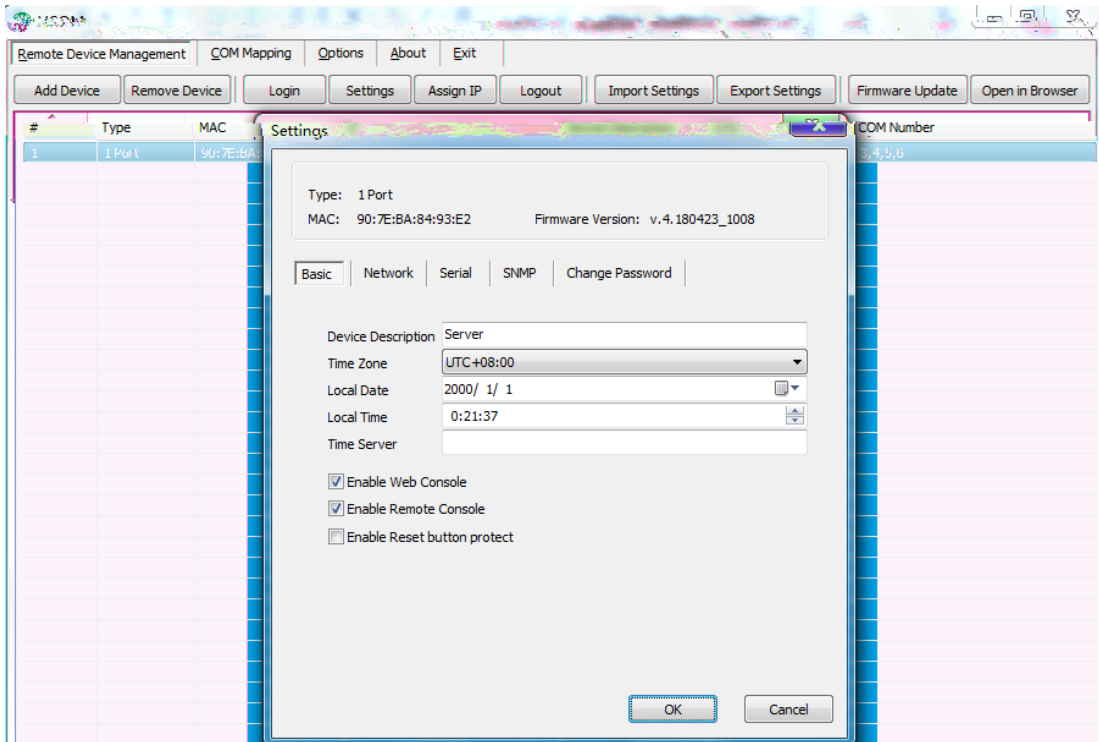
" VCOM" remote devices Management
" Import Settings" 1 " Browse"
2 " OK" 3 " OK"



1



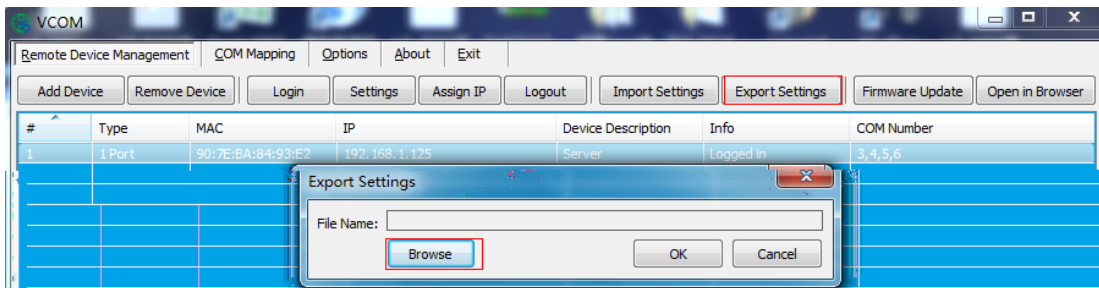
2



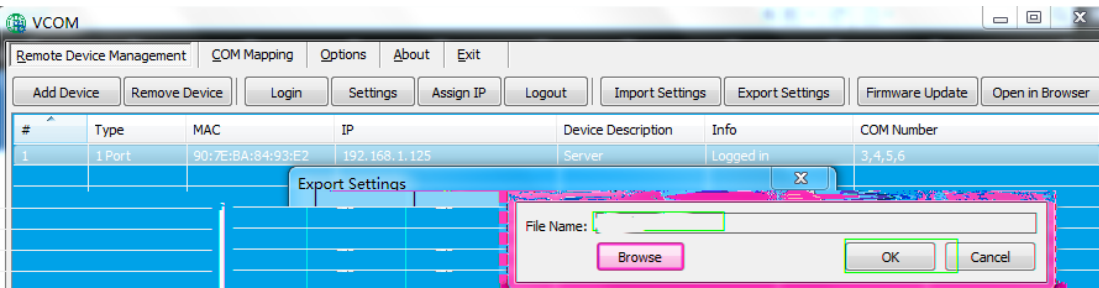
3

6.1.8

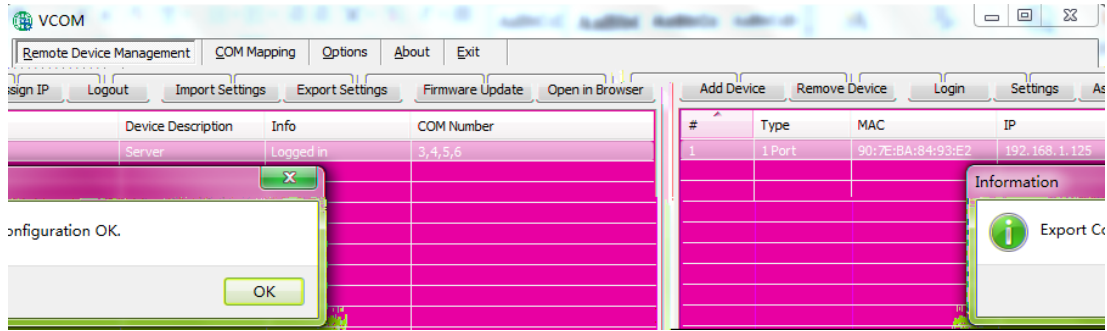
“ VCOM” remote devices Management
 “ Export Settings” 1 “ Browse”
 2 “ OK” 3



1



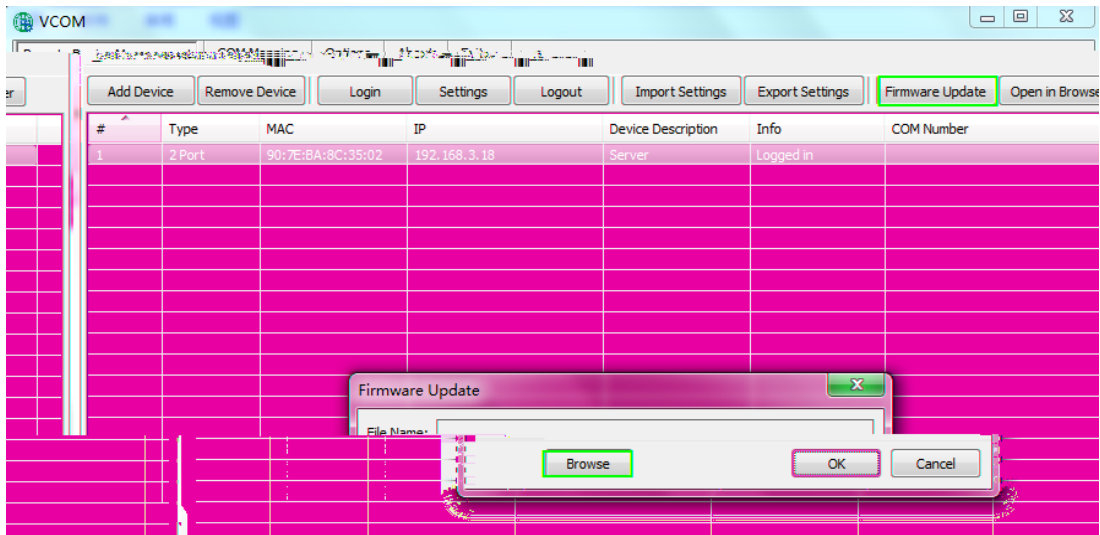
2



3

6.1.9

" VCOM" remote devices Management
 " Firmware Update" " Browse" " OK"
 240s



6.1.10

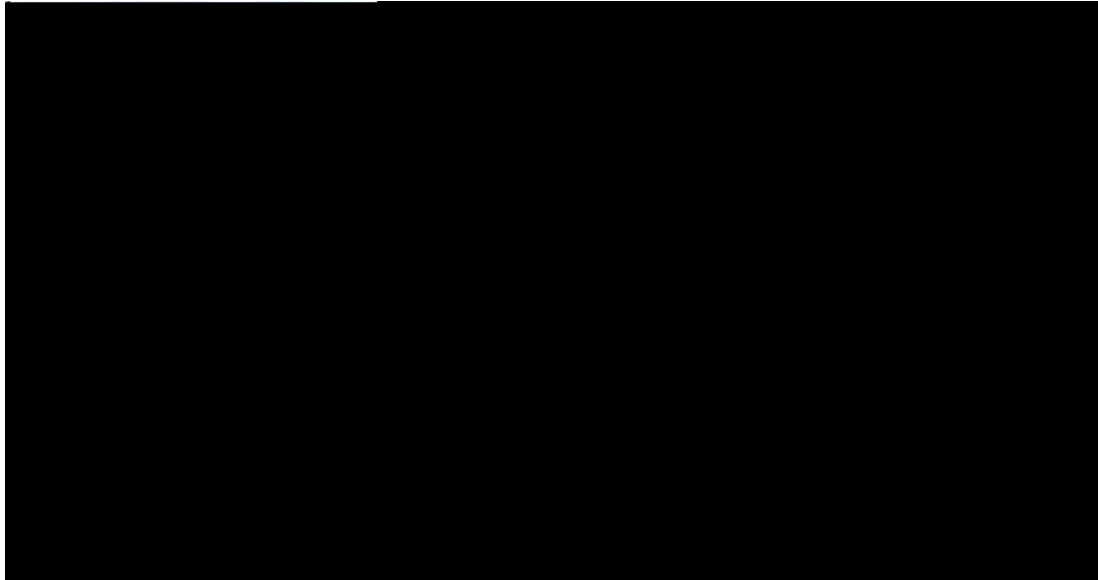
" VCOM" remote devices Management " Open in
 Browser" IE



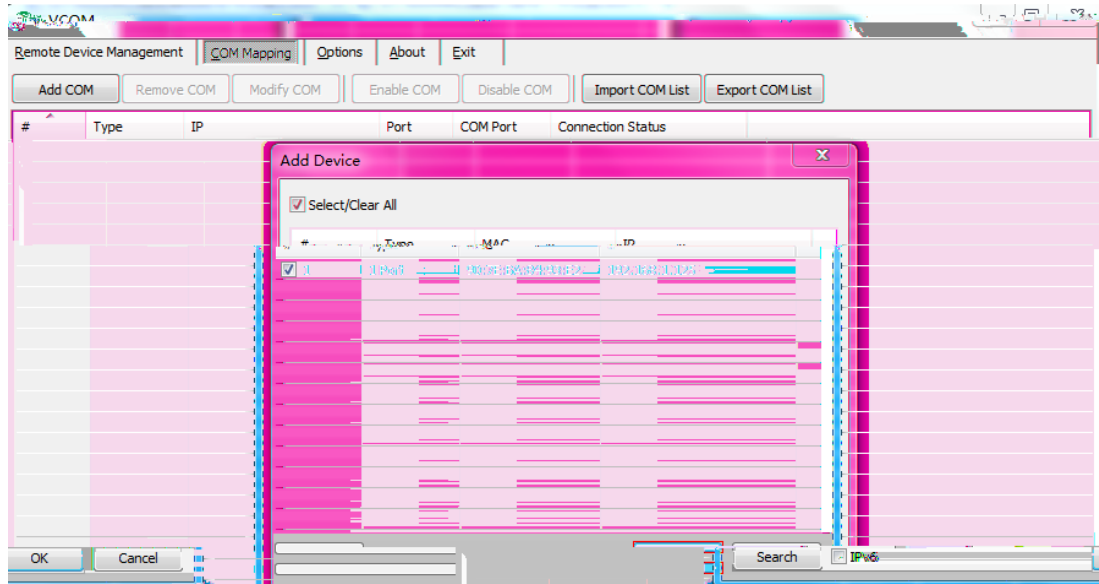
6.2 COM Mapping

6.2.1

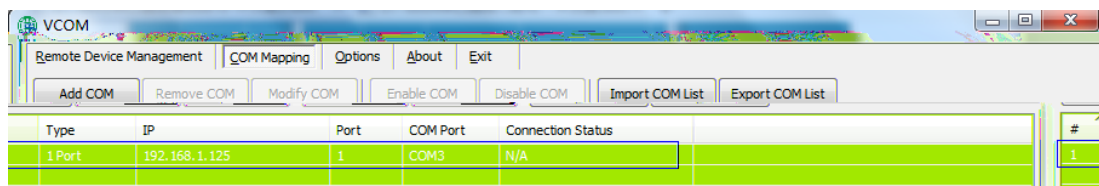
1 “ VCOM” COM Mapping—Add COM “ Add Device” ,



2 “ Add Device” , “ ok”



3

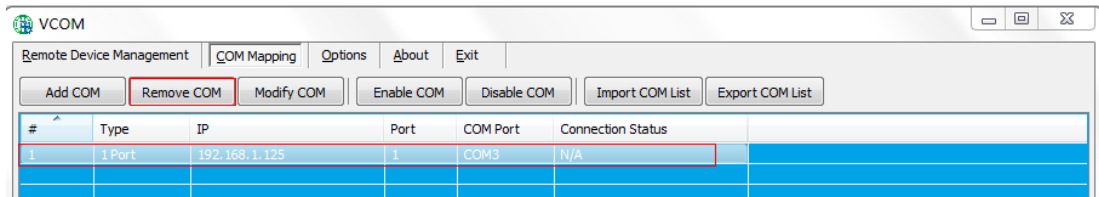


6.2.2

" VCOM"

COM Mapping

" Remove COM"



6.2.3

" VCOM"

COM Mapping

" Modify COM"

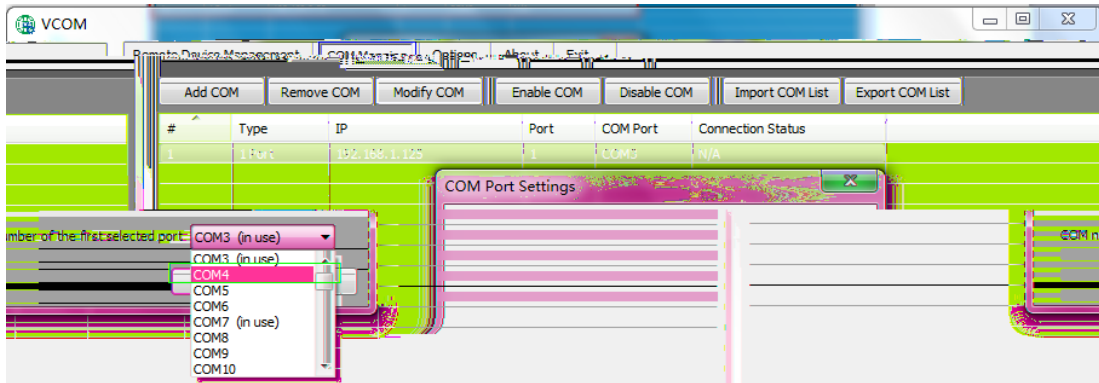
1

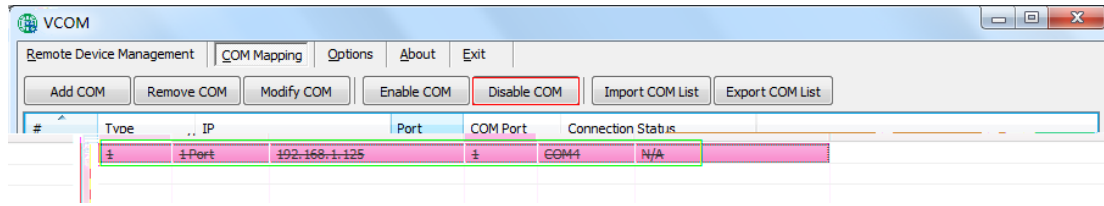
" COM6"

Port1

" COM2"

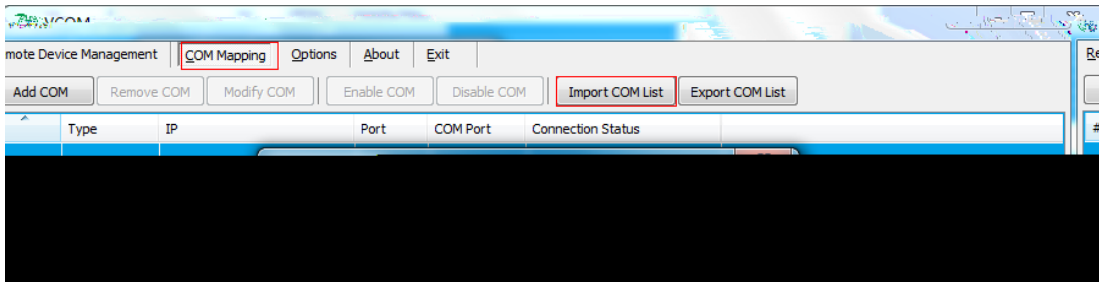
" COM6" , 2



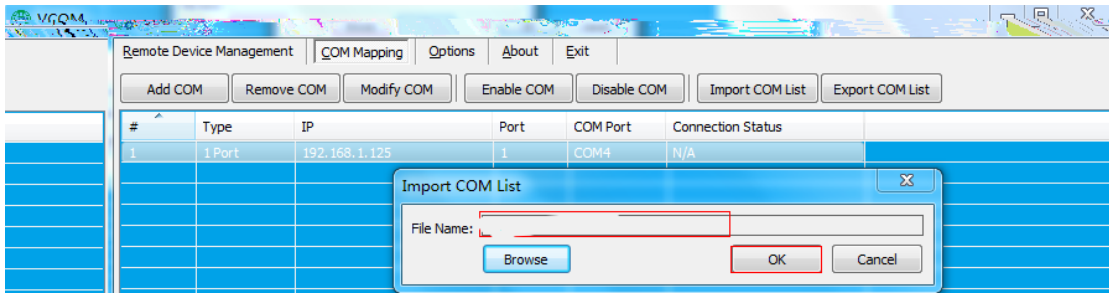


6.2.6

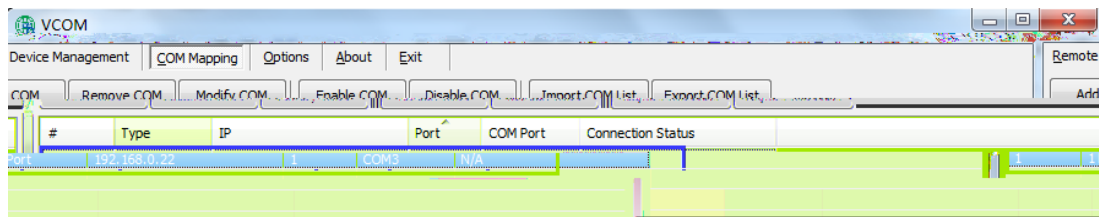
" VCOM" COM Mapping " Import COM List"
1 " Browse" 2
" OK" 3



1



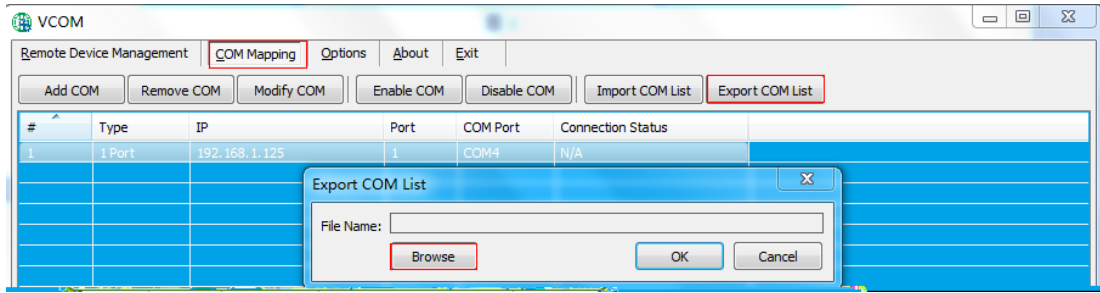
2



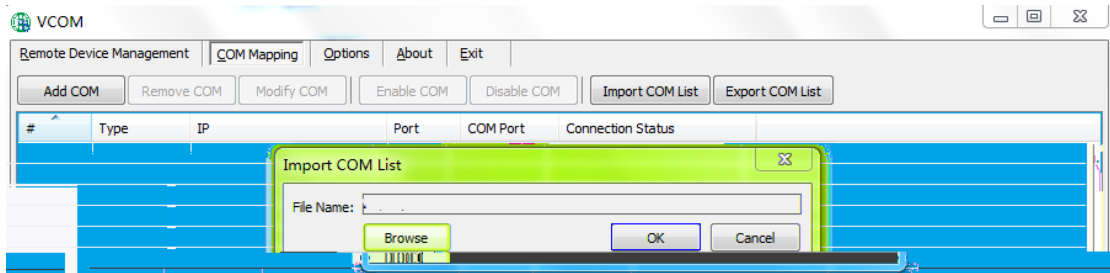
3

6.2.7

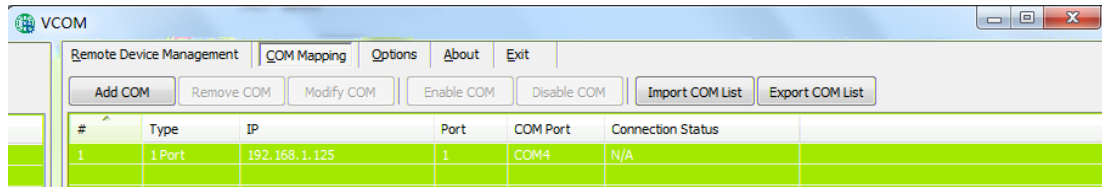
" VCOM" COM Mapping " Export COM List"
1 " Browse" 2
" OK" 3



1



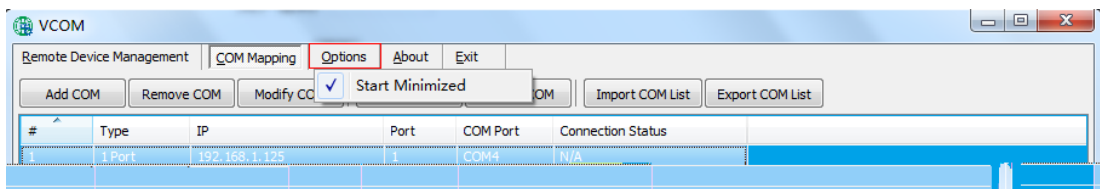
2



3

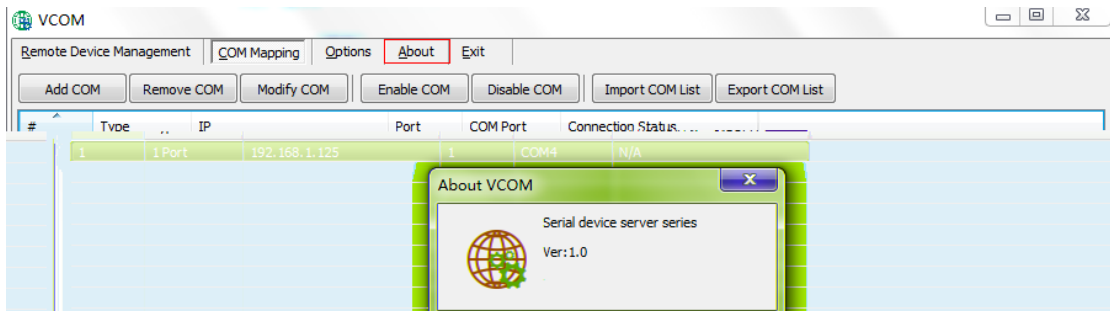
6.3 Options

VCOM



6.4 About

" About"



6.5 Exit

" Exit"