

Model:UT-880-LED
USB/RS-232



.....3

.....3

.....3

.....4

.....4

.....5

.....6

.....6

.....7-14

一、概述

PC	USB	PC	
	RS-232		USB
RS-232	PC	RS-232	
UT-880-LED		USB/RS-232	USB RS-232
	USB	RS-232	
I/O			
UT-880-LED			300-460800bps
			USB RS-232

二、主要功能

UT-880-LED

1

三、硬件安装及应用

UT-880-LED		USB
USB	USB/DB9M	/
RS-232		9 DCD
RXD TXD DTR GND DSR RTS CTS RI		

四、性能参数

1	USBV1.1	1.0	2.0	EIA	RS-232
2	USB	VCC	DATA-	DATA+	GND FG
3	RS-232	DCD	RXD	TXD	DTR GND DSR RTS CTS RI
4					
5					
6		300-460800bps			
7					
8		RS-232	5	USB	5
9			±15KV		

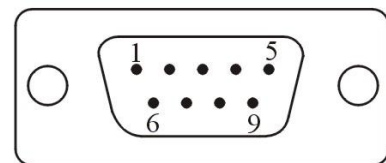
10	USB	A	DB9			
11	9		TXD	RXD	DCD	
	DTR	GND	DSR	RTS	CTS	
	RI	1	POWER)			
12						
13		1500mm±30mm				
14		-25	70	5%	95%	
15	Windows95/98/2000/xp/Vista		IMAG			

五、连接器和信号

1 RS-232C

DB9 M(PIN)	RS-232C
1	DCD
2	SIN (RXD)
3	SOUT (TXD)
4	DTR
5	GND
6	DSR
7	RTS
8	CTS
9	RI

DB9针型



2 USB-A USB



六、产品外形和通信连接示意图



1 USBA

2

3 USB2.0

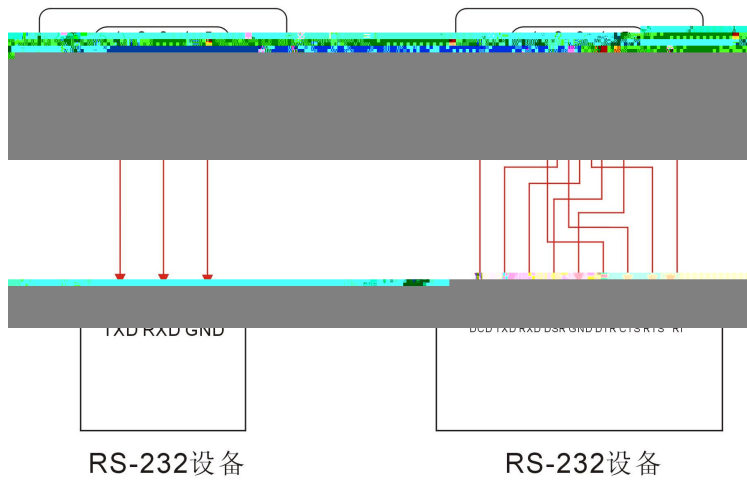
4

5 DB9

6 MCU

USB RS-232

1 DCD 2 RXD 3 TXD 4 DTR 5 GND 6 DSR 7 RTS 8 CTS 9 RI



七、故障及排除

1

A USB

B RS-485/RS-422

C

D

E

F

2

A

八、产品外观图



九、安装驱动程序步骤

UT-880-LED

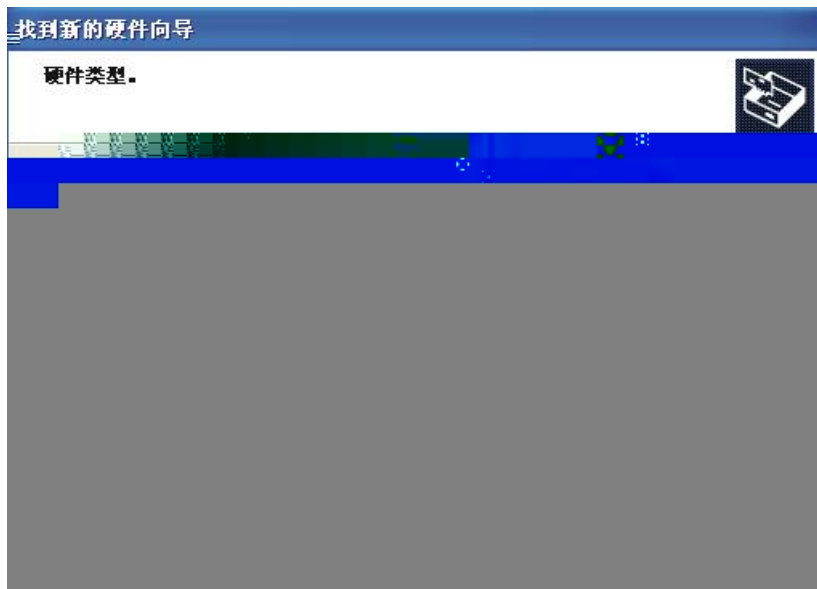
[

()]

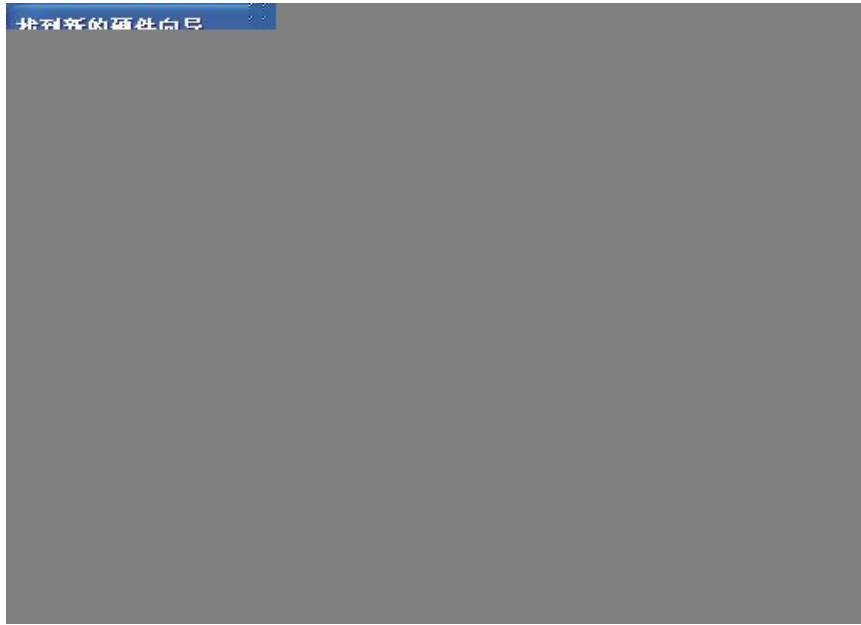


[

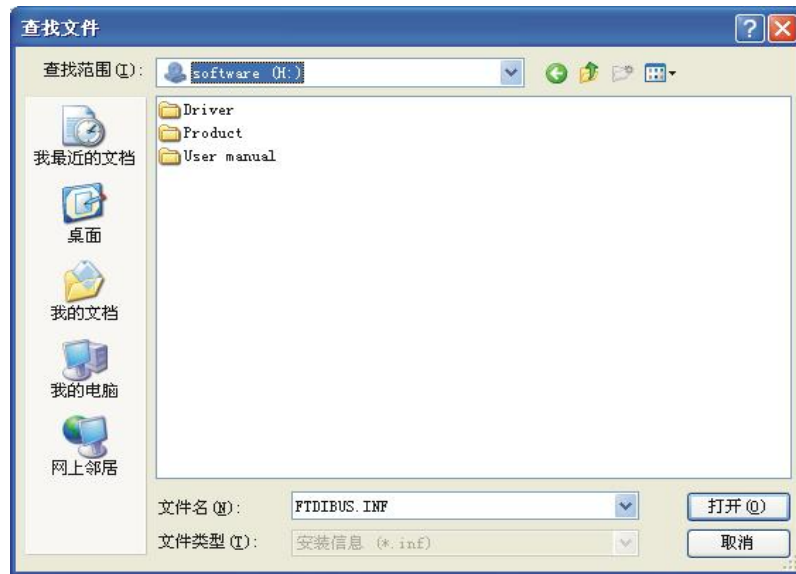
D]



[H]



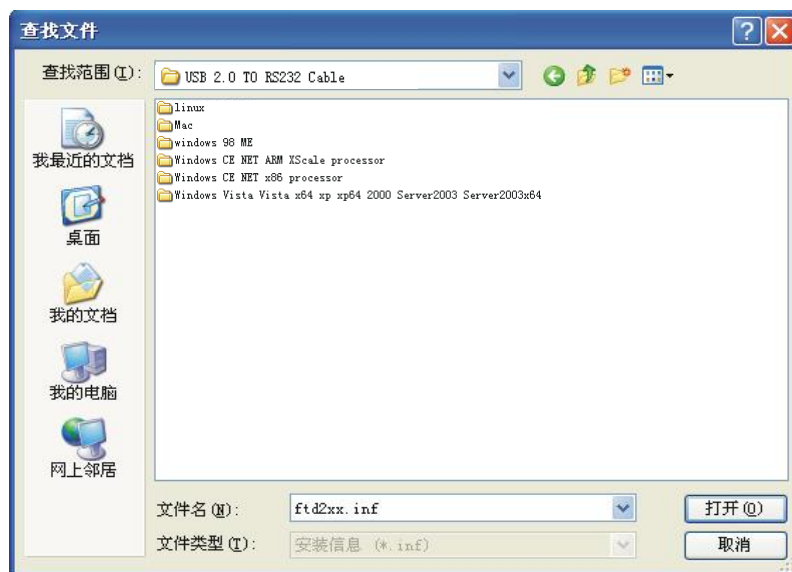
USB 2.0 TO Rs232 Cable)



windows xp

Windows Vista Vista x64 xp xp64 2000 Server2003

Server2003x64)



FTDIBUS.INF

FTDIBUS



()



USB Serial Converter



USB Serial Converter

USB Serial Prot



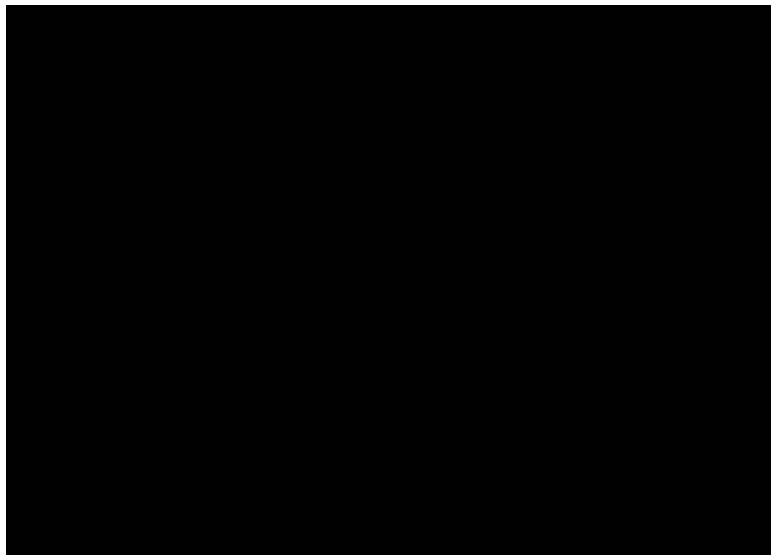
USB Serial Port

USB Serial

Converter

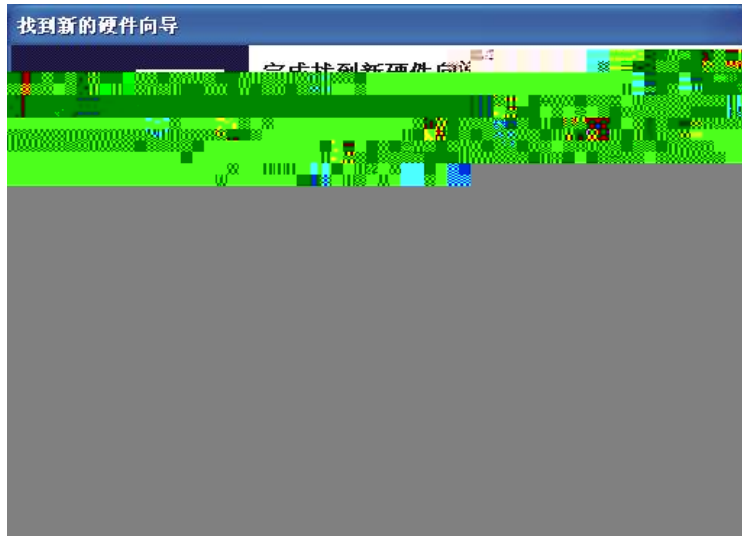


USB Serial Port



USB Serial Port

UT-880-LED



USB

COM

COM3

COM

UT-880-LED

