

UT-453

██████████	UT-453	-----	2
a)			
b)			
c)			
██████████	UT-453	-----	4
a)			
b)	LED		
c)			
██████████	UT-453	-----	5
a)			
b)			
██████████	UT-453	WEB -----	8
d)			
e)			
f)			
g)			
h)			
i)			
j)			
k)			
██████████	UT-453	-----	14
a)	serial_ethernet_connector_CH.exe	IP	
b)			
c)			
d)			
e)			
f)	TCP server		
██████████	: VCOM	-----	14
a)			
b)			
c)			
d)			
e)			
f)			

UT-453

a

UT-453 RS-232/485/422 TCP/IP RS-232/485/422 TCP/IP TCP/IP
 TCP/IP
 IP DHCP IP Internet
 TCP/IP ARP IP TCP
 HTTP ICMP SOCKET UDP MODBUS

b

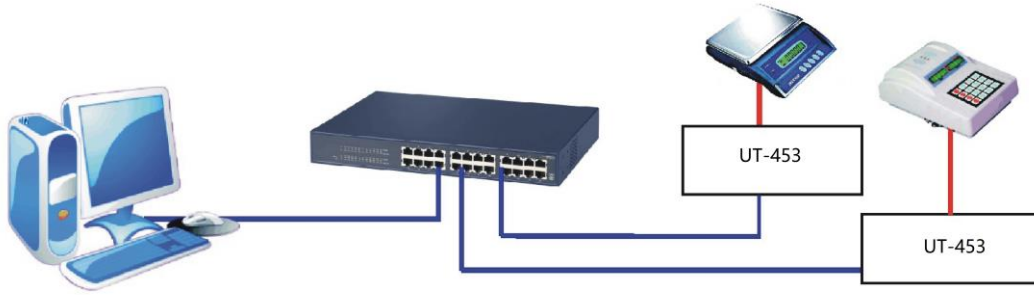


- ☆ ,
- ☆ Windows COM
- ☆ Windows 2000/2003/ XP/VISTA/7
- ☆ Modem ISDN PC
- ☆ Reset
- ☆ 10/100M
- ☆ RXD, TXD, RTS, CTS, GND
- ☆ 32 120MHz CPU
- ☆

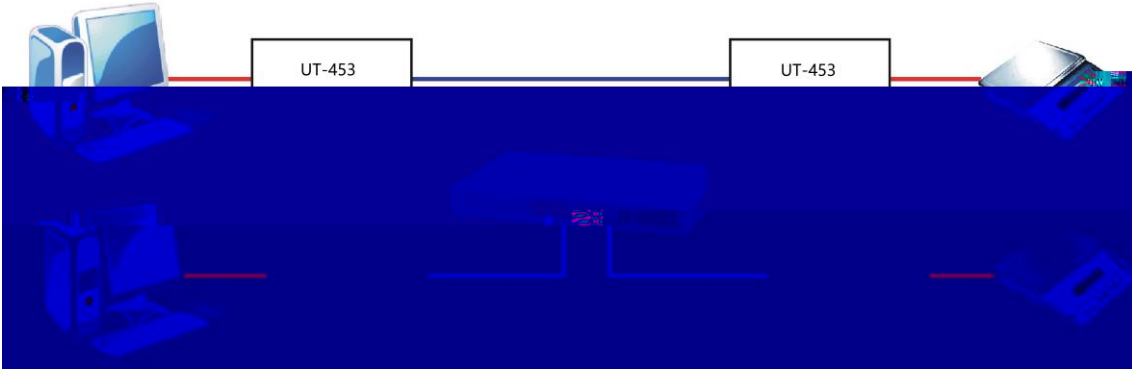


ARP IP ICMP UDP TCP PPP HTTP TELNET DNS, DHCP, PAP CHAP
 Windows
 Windows com Windows
 Windows 2000/2003/ XP/VISTA/7 256 UT-453
 Window COM COM
 web

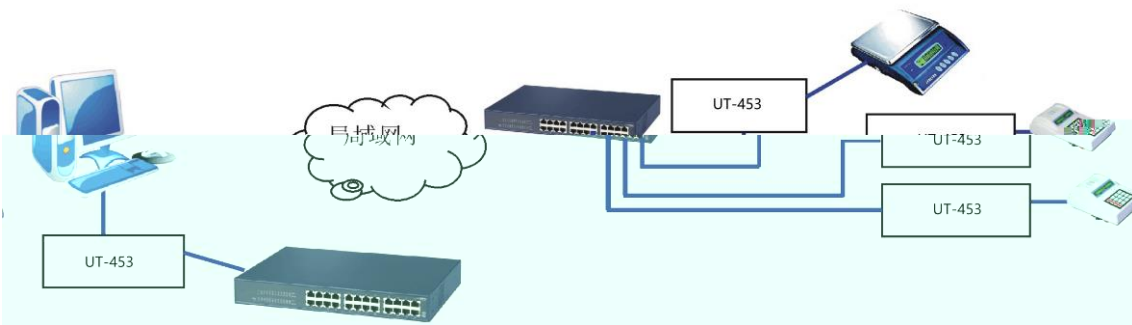
/



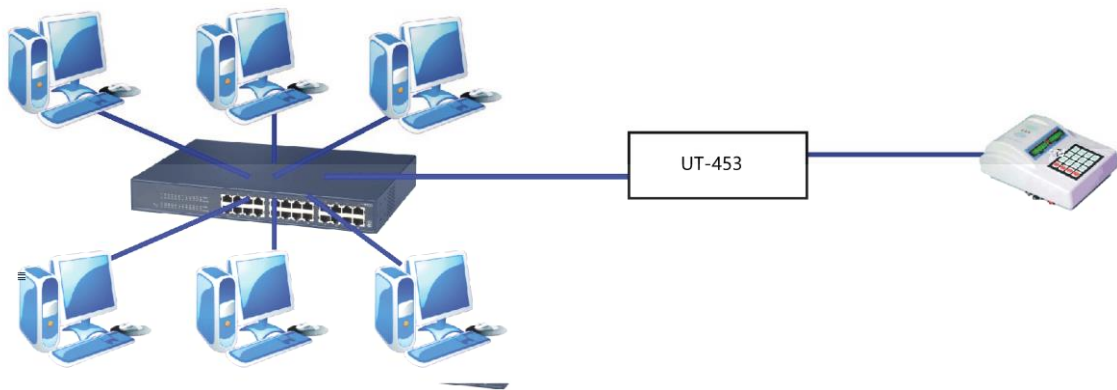
2



3



4



UT-453

a

1 IP

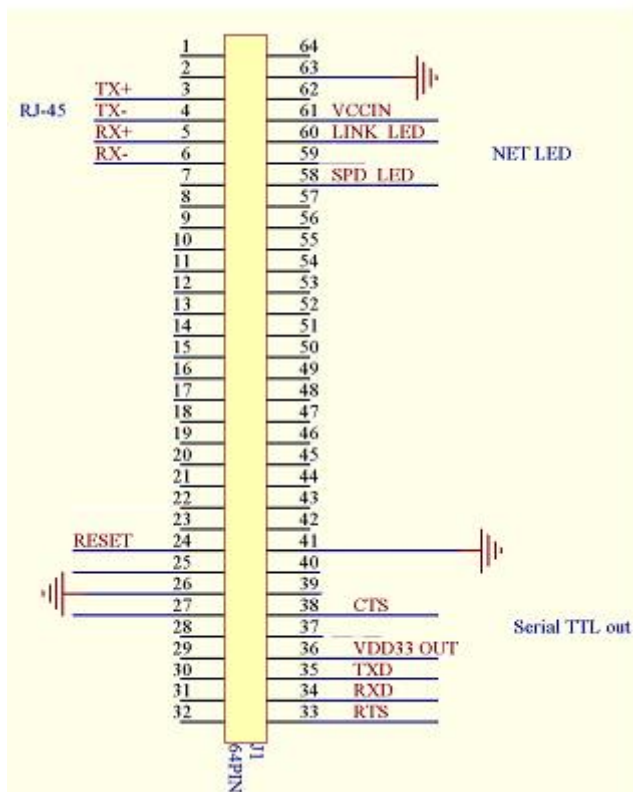
2

b LED

	PWR Red	RUN Green	LINK Green	ACT Yellow
UT-453	√	√	√	√

c

1 UT-453



UT-453

a

	32bit LX6 240MHZ			
	520K			
	10/100M	1.5KV	MDI /MDI -X	
	RS-232/485/422			
		PWR	RUN	LINK
	DC5-12V			
	1	RESET		
	12V@50mA			
	: -40~85° C			
	: -40~85° C			
	: 5% ~95% ()			
	0~4000m			
L× W× H	65mm× 27mm× 14mm			
	12g			

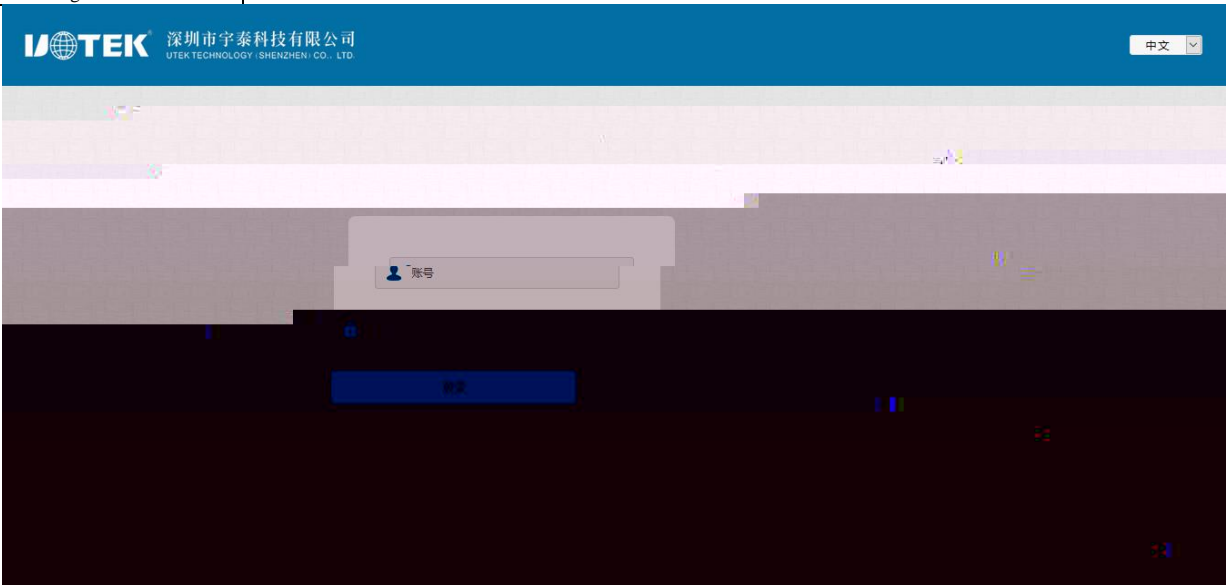
b ()

UT-453	1	1

UT-453 WEB

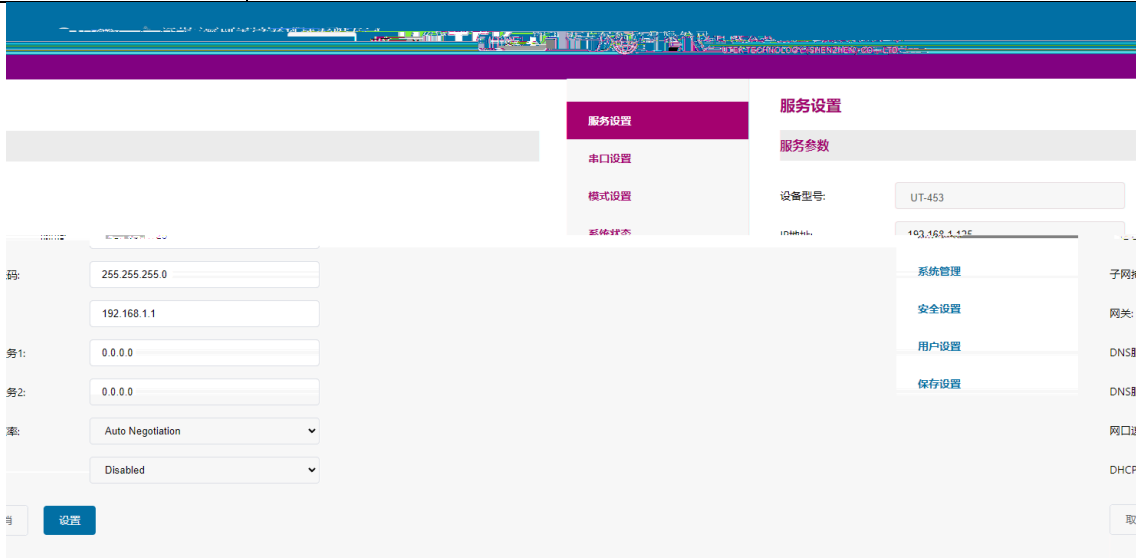
a

	admin
	admin
/English	



b

	UT-453		
IP	IP		
	IP		
DNS 1	DNS		
DNS 2	DNS		
DHCP	DHCP	Disabled	Enabled



c

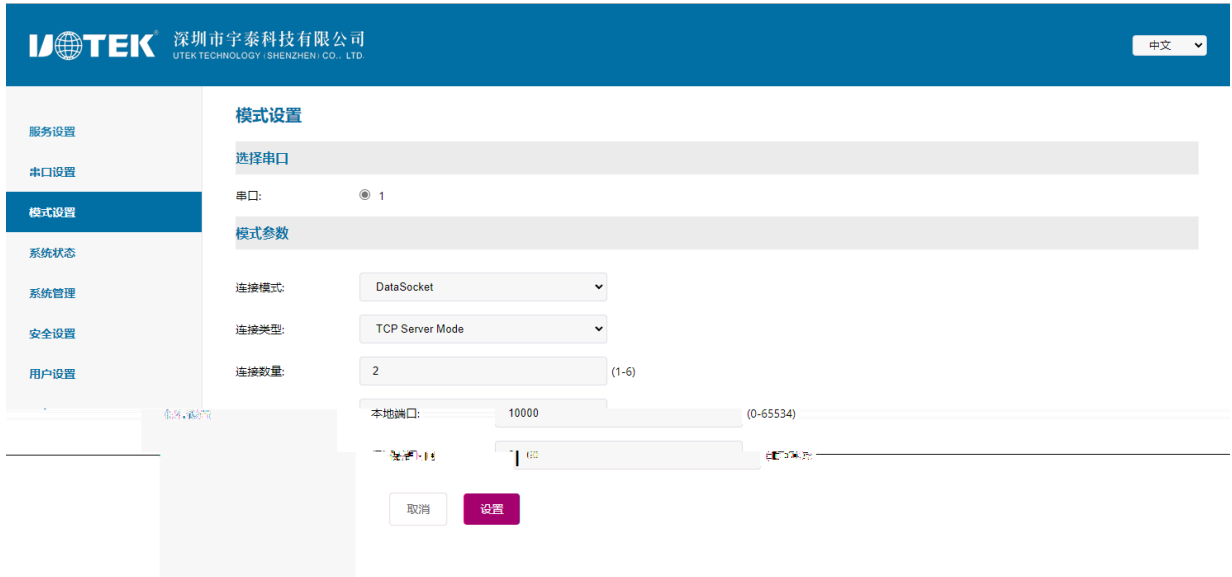
	1		
	RS232/RS485/422		
	8		
	1		
	None	Even	Odd
	None	None	None
	Auto CTS/RTS		
	0-5000ms	0	
	0-1024Byte	0	



d

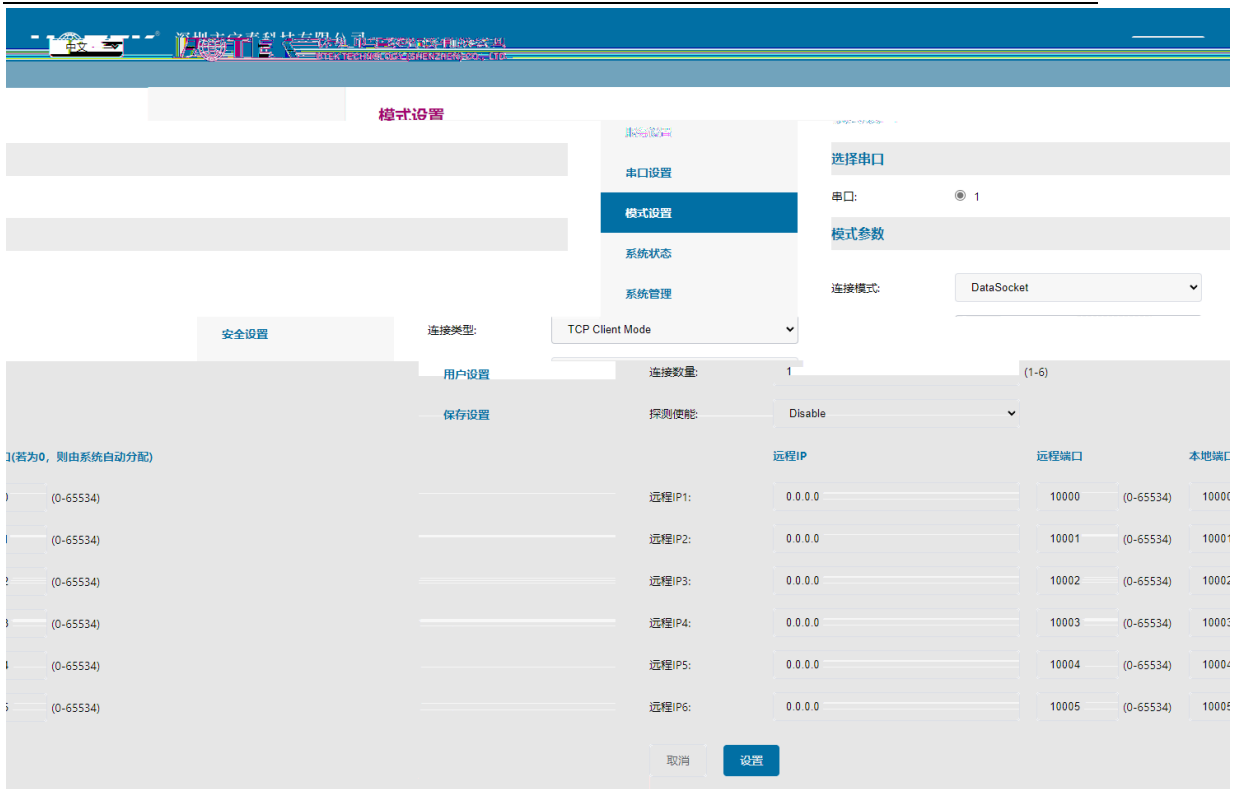
1 TCP Datasocket--TCP Server Mode

	Datasocket	
	TCP Server Mode	TCP
	TCP Server	
	TCP	TCP



2 TCP Datasocket--TCP Client Mode





3 UDP Datasocket--UDP Client Mode

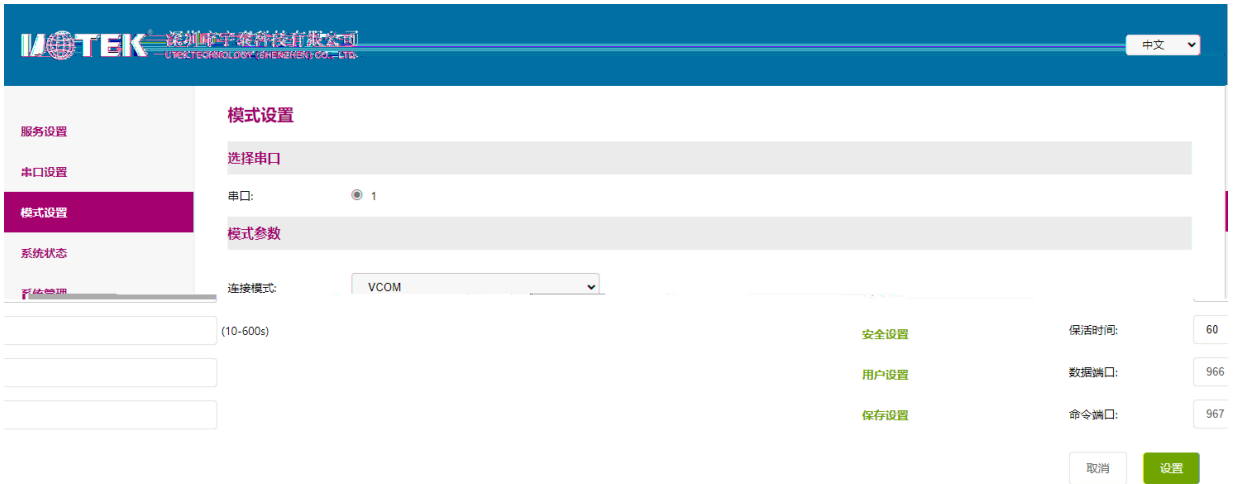
	Datasocket		
	UDP Client Mode	UDP	UDP
IP	UDP IP		
	UDP		



4 VCOM

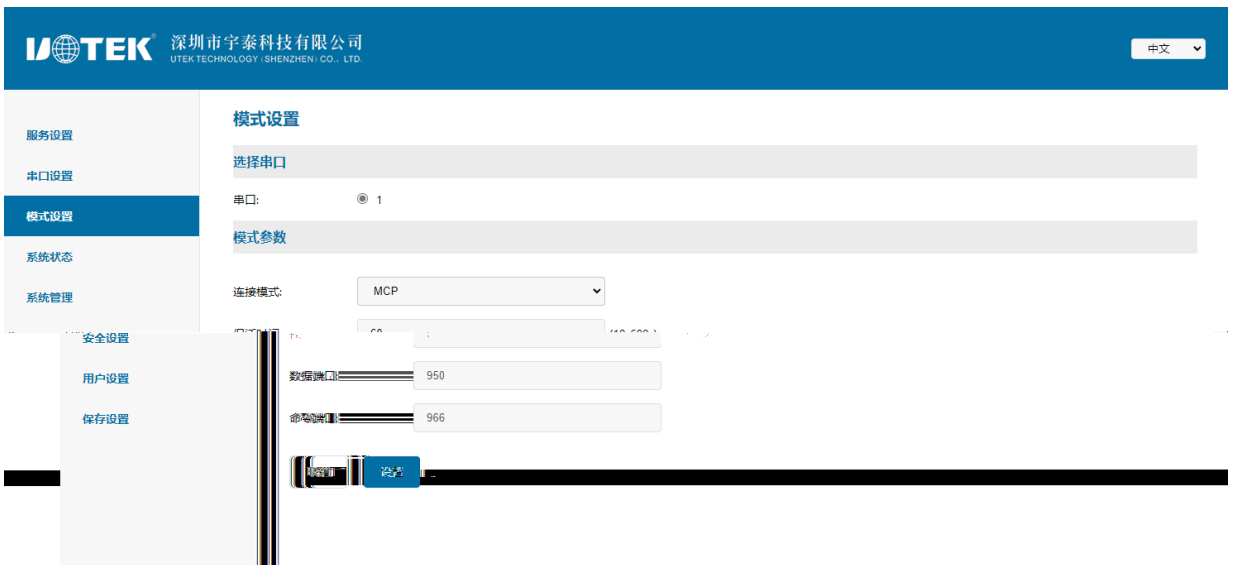
TCP/IP windows
 COM COM COM
 COM1024

	VCOM
	TCP



5 MCP
 VCOM windows
 COM COM COM VCOM
 Windows

	MCP
	TCP



6 ModbusTCP Modbus--TCP Server Mode
 Modbus-TCP Modbus-RTU

	Modbus
	TCP Server Mode

	TCP Server
	TCP

UOTEK 深圳市宇泰科技有限公司 UTEK TECHNOLOGY (SHENZHEN) CO., LTD. 中文

模式设置

选择串口

串口: 1

模式参数

连接模式: Modbus

连接类型: TCP Server Mode

连接数量: 2 (1-6)

本地端口: 10000 (0-65534)

保活时间: 60 (10-600s)

7 Modbus TCP Modbus--TCP Client Mode

	Modbus
	TCP Client Mode TCP
IP	IP

UOTEK 深圳市宇泰科技有限公司 UTEK TECHNOLOGY (SHENZHEN) CO., LTD. 中文

模式设置

选择串口

串口: 1

模式参数

连接模式: Modbus

连接类型: TCP Client Mode

连接数量: 1 (1-6)

本地端口: 10000 (0-65534)

本地端口(若为0, 则由系统自动分配)

远程IP: 0.0.0.0

e 1 TCP Status TCP

接收统计	状态
0	1
0	1

- 服务设置
- 串口设置
- 模式设置
- 系统状态
- 系统管理
- 安全设置
- 用户设置
- 保存设置

系统状态

系统状态信息

状态: TCP Status

类型	本地IP	远程IP	本地端口	远程端口	发送统计
active	192.168.1.125	192.168.1.55	5004	55772	0
active	192.168.1.125	192.168.1.55	5014	55813	0

2 UDP Status

UDP

深圳市宇泰科技有限公司
UTEK TECHNOLOGY (SHENZHEN) CO., LTD.

系统状态

系统状态信息

状态: UDP Status

本地IP	远程IP	本地端口	远程端口
暂无数据			

- 服务设置
- 串口设置
- 模式设置
- 系统状态
- 系统管理

3 Serial Port status

深圳市宇泰科技有限公司
UTEK TECHNOLOGY (SHENZHEN) CO., LTD.

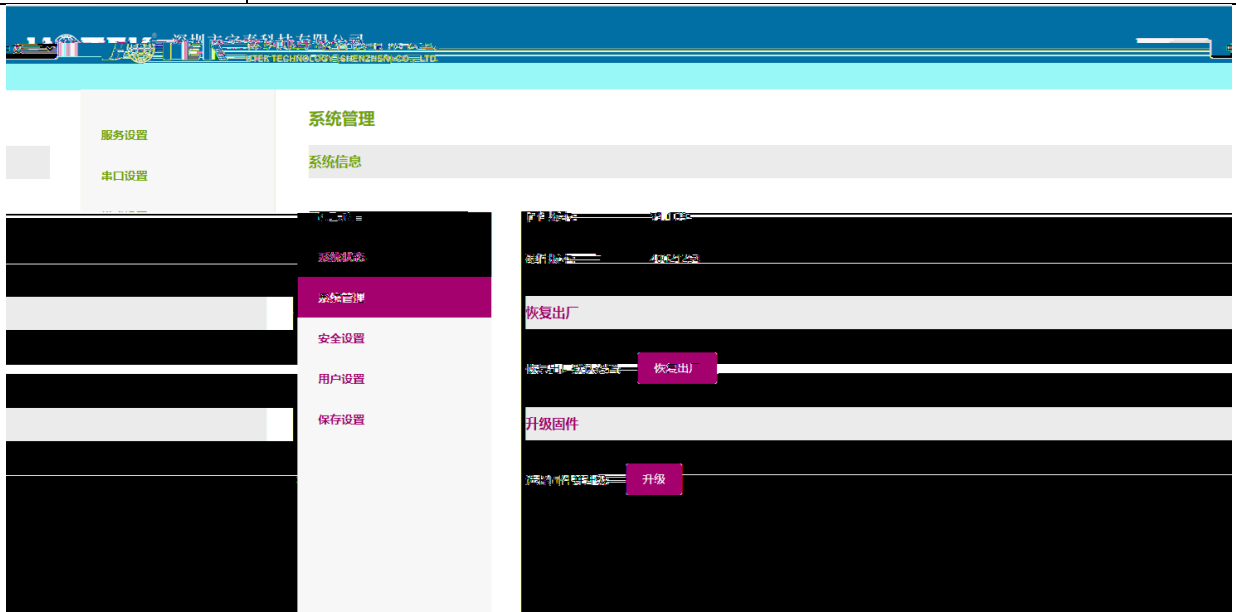
系统状态

系统状态信息

状态: Serial Port Status

串口号	接收统计	发送统计	RTS	CTS
1	0	0	OFF	OFF

- 服务设置
- 串口设置
- 模式设置
- 系统状态
- 系统管理
- 安全设置
- 用户设置
- 保存设置

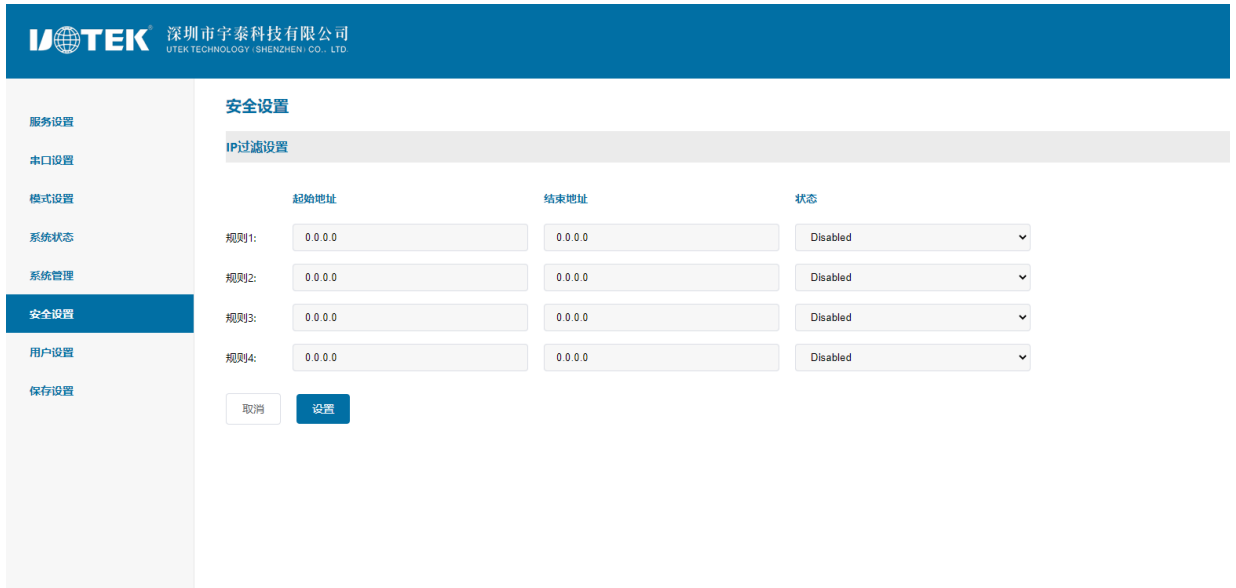


g

IP

IP

WEB



h

	WEB

服务设置
串口设置
模式设置
系统状态
系统管理
安全设置
用户设置
保存设置

用户设置

退出登录

退出当前登录:

修改密码

原密码:

新密码:

确认密码:

I

服务设置
串口设置
模式设置
系统状态
系统管理
安全设置
保存设置
用户设置

保存设置

保存并重启

请检查所有设置选项。点击重启按钮后生效

安全设置
用户设置
保存设置

UT-453

a)

```

1          IP
ACT(      (          )          ,LAN
  10M     100M     )
2
3          ,
4          (          )
" reset"  5s     IP          ,
              IP          192.168.1.125.
  
```

b)

```

1          , ping
2
3
4          COM
  
```

c)

```

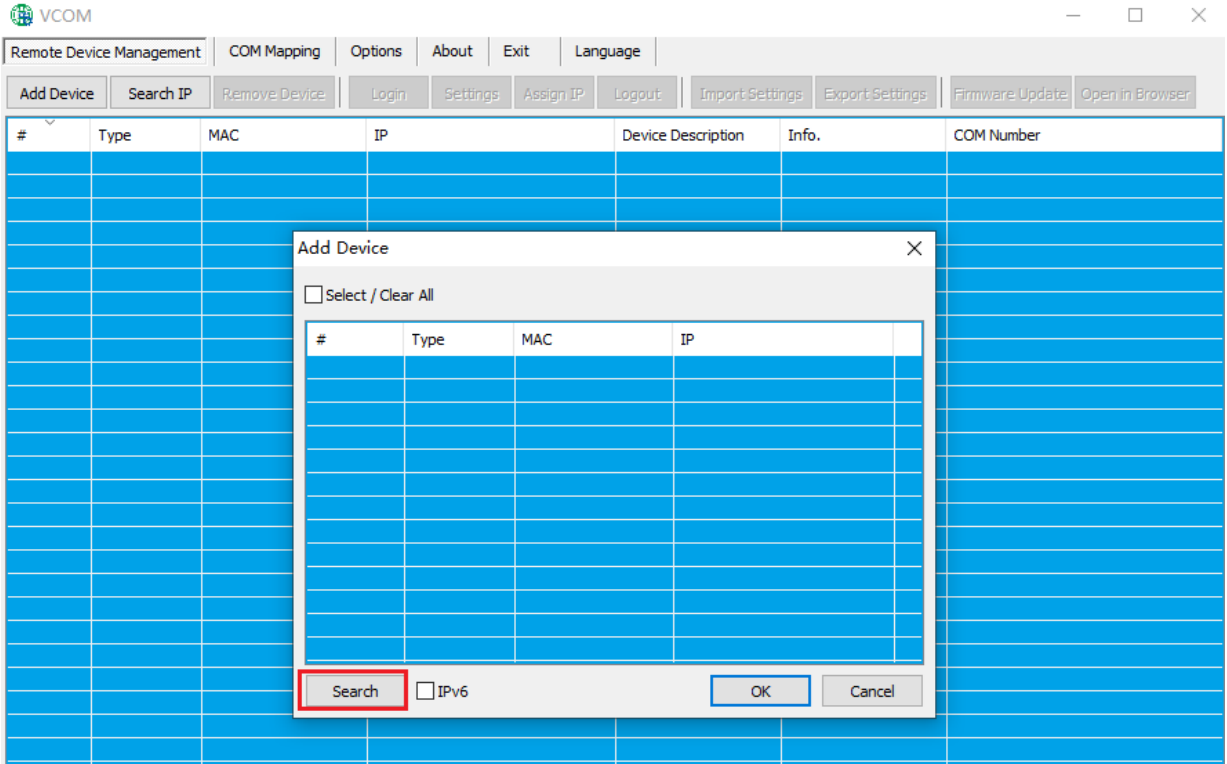
1
2  [          ] [ connected to 0 from 1] IP          "          "
3  [          ] [ connected to 0 from 1] "          " "          "
4
  
```

d)

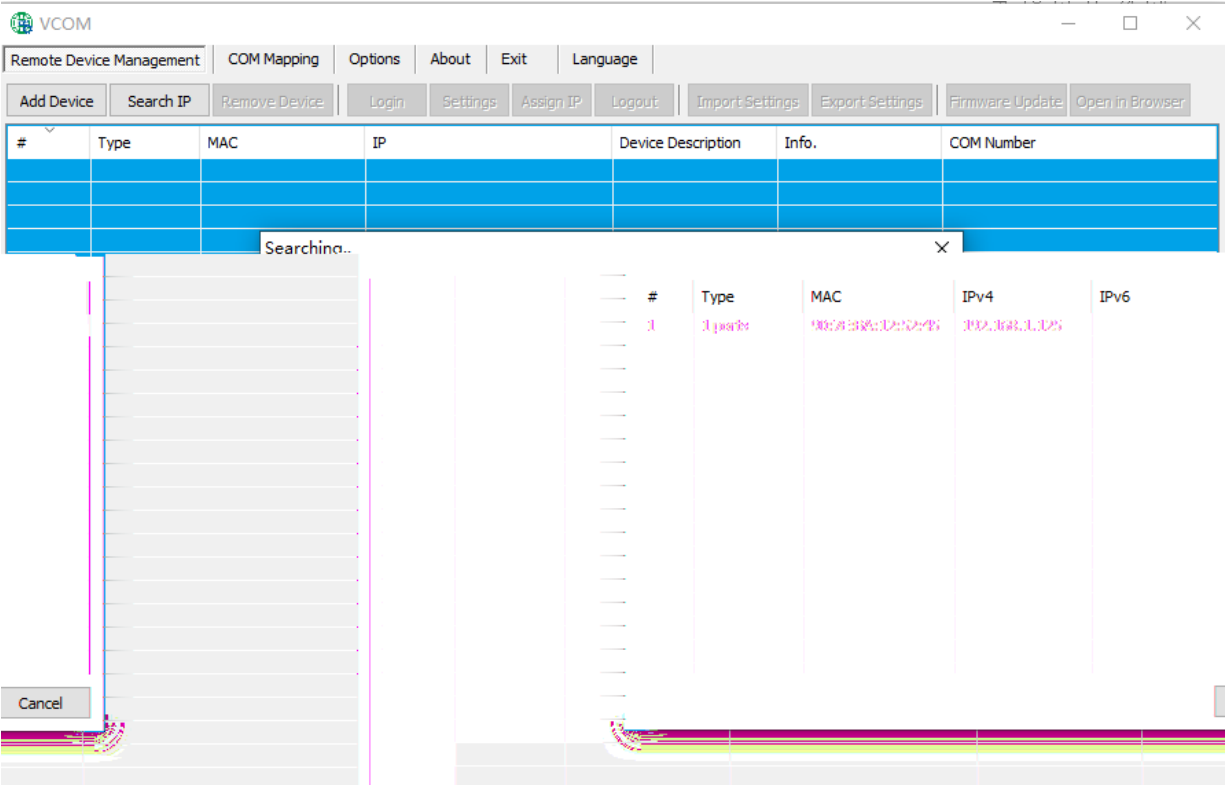
```

1          "reset"  5
  
```

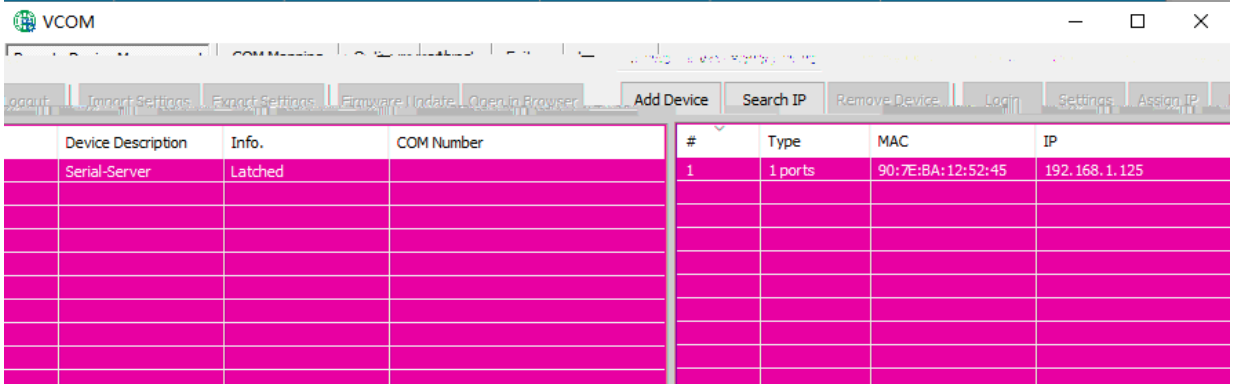
1



2



3



The screenshot shows the VCOM web interface with a table containing the following data:

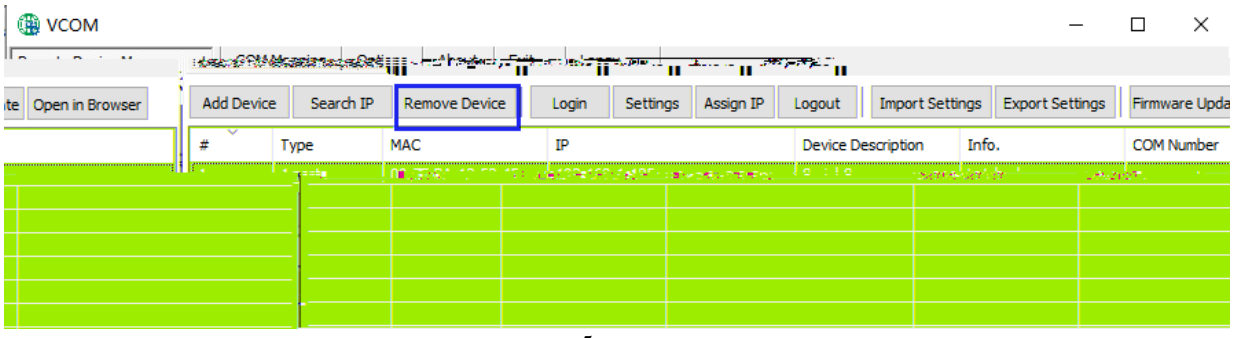
Device Description	Info.	COM Number	#	Type	MAC	IP
Serial-Server	Latched		1	1 ports	90:7E:8A:12:52:45	192.168.1.125

4

2

" VCOM" " "

5



The screenshot shows the VCOM web interface with the 'Remove Device' button highlighted in a blue box. The table below it is empty.

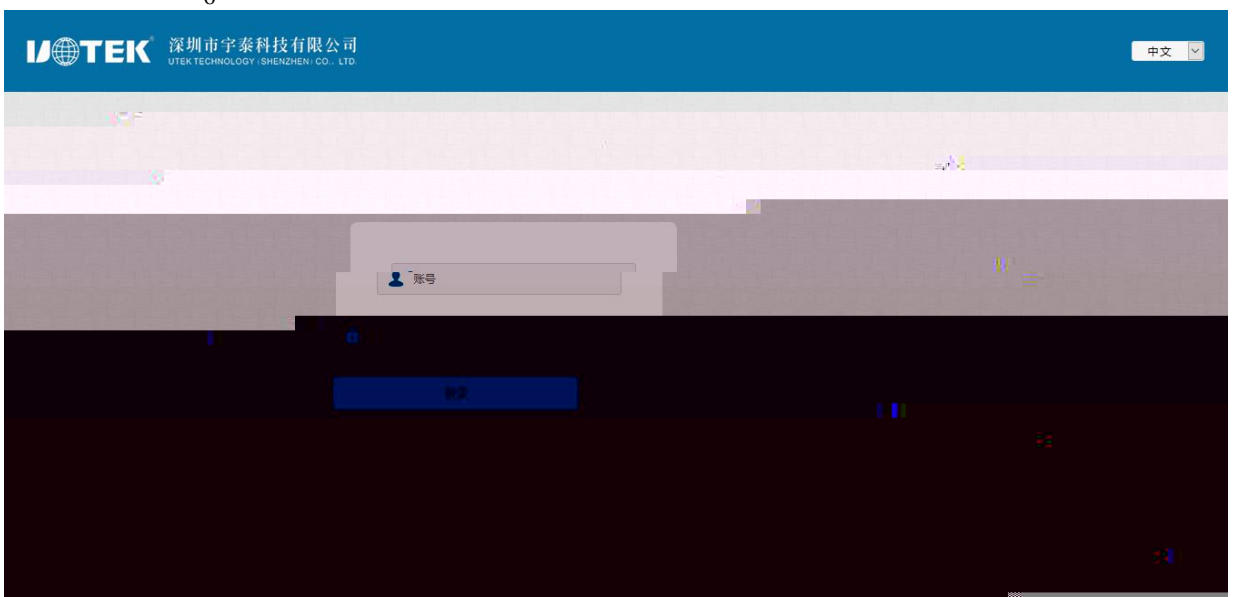
#	Type	MAC	IP	Device Description	Info.	COM Number

5

3

" VCOM" " " IE

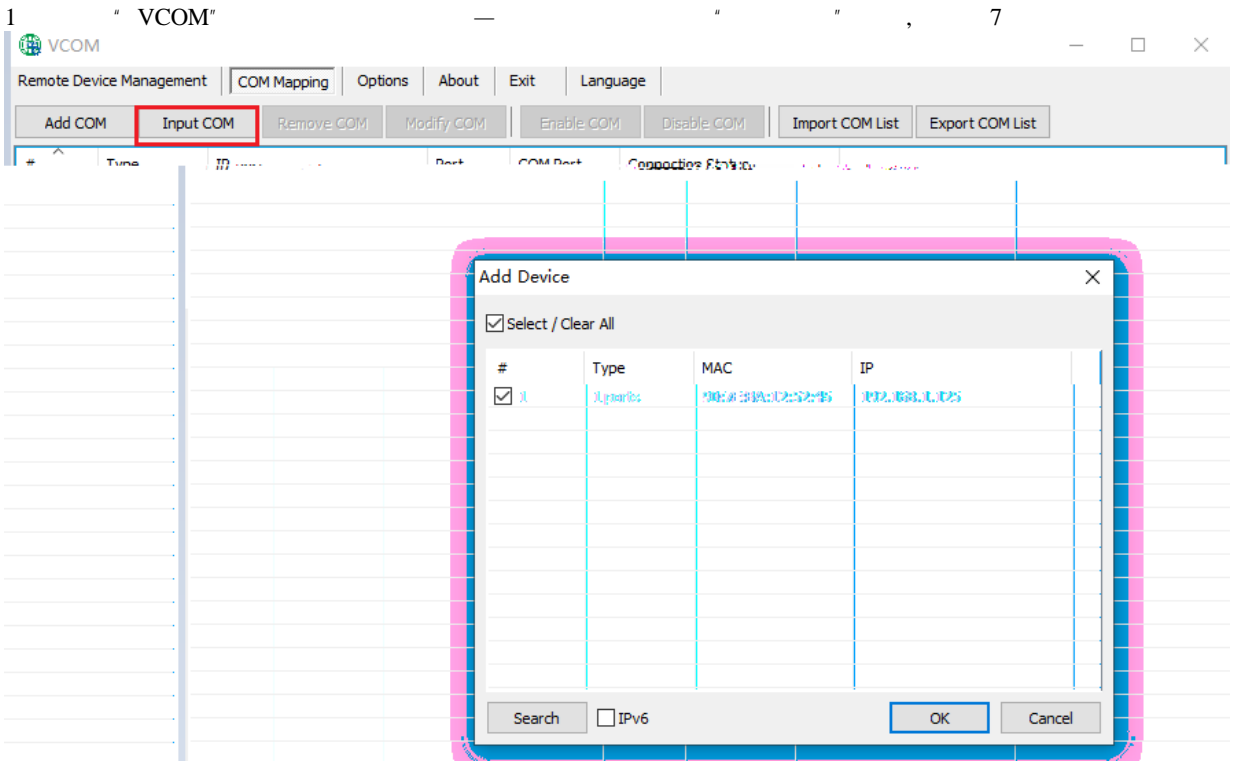
6



6

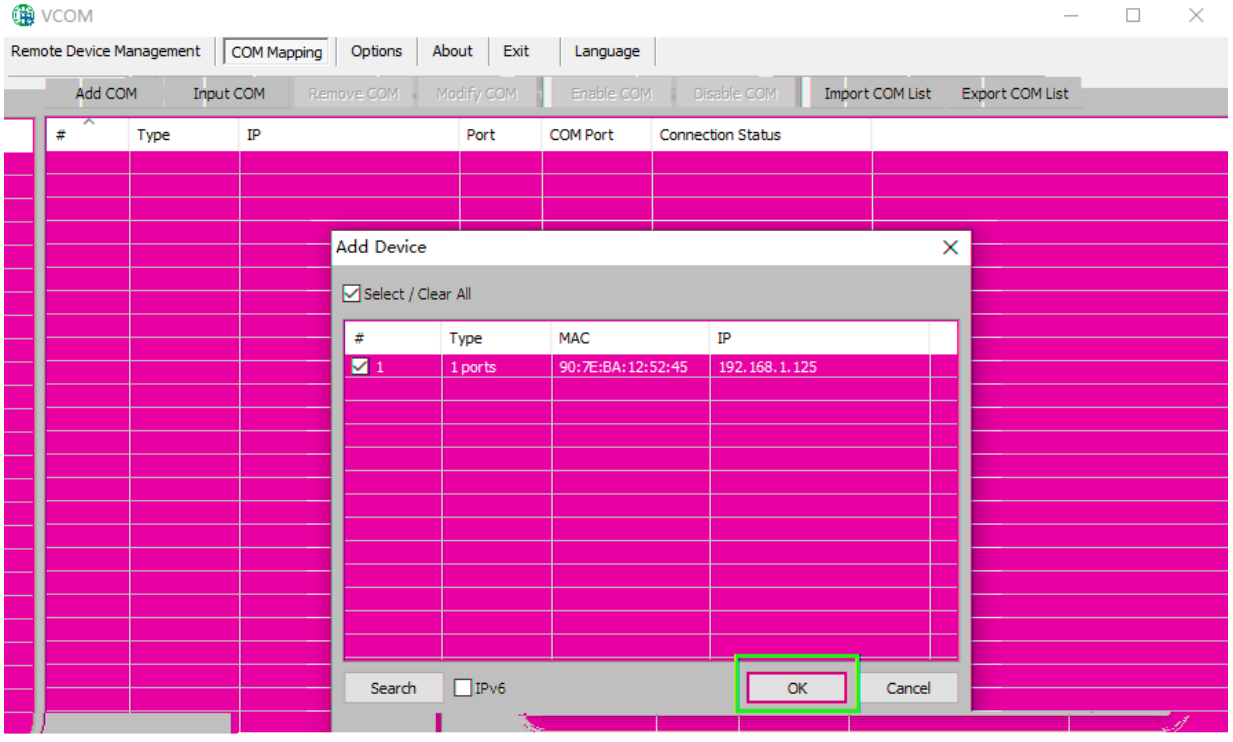
b

1



7

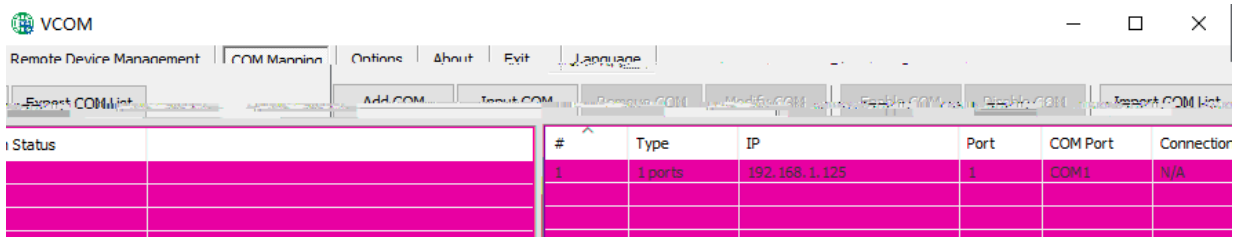
2 " " , " " 8



8

3

9

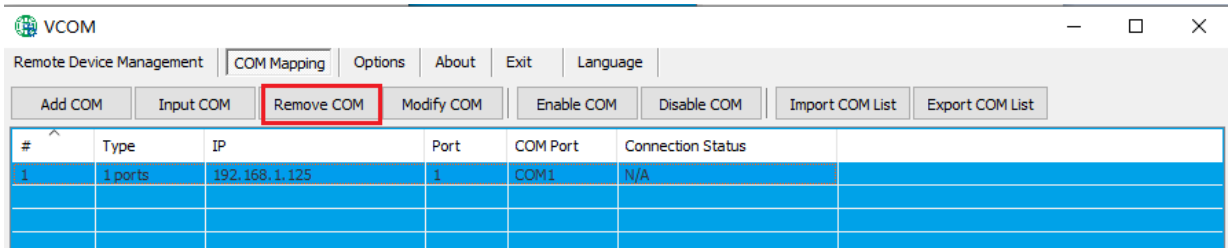


9

2

" VCOM"

10



10

3

" VCOM"

11

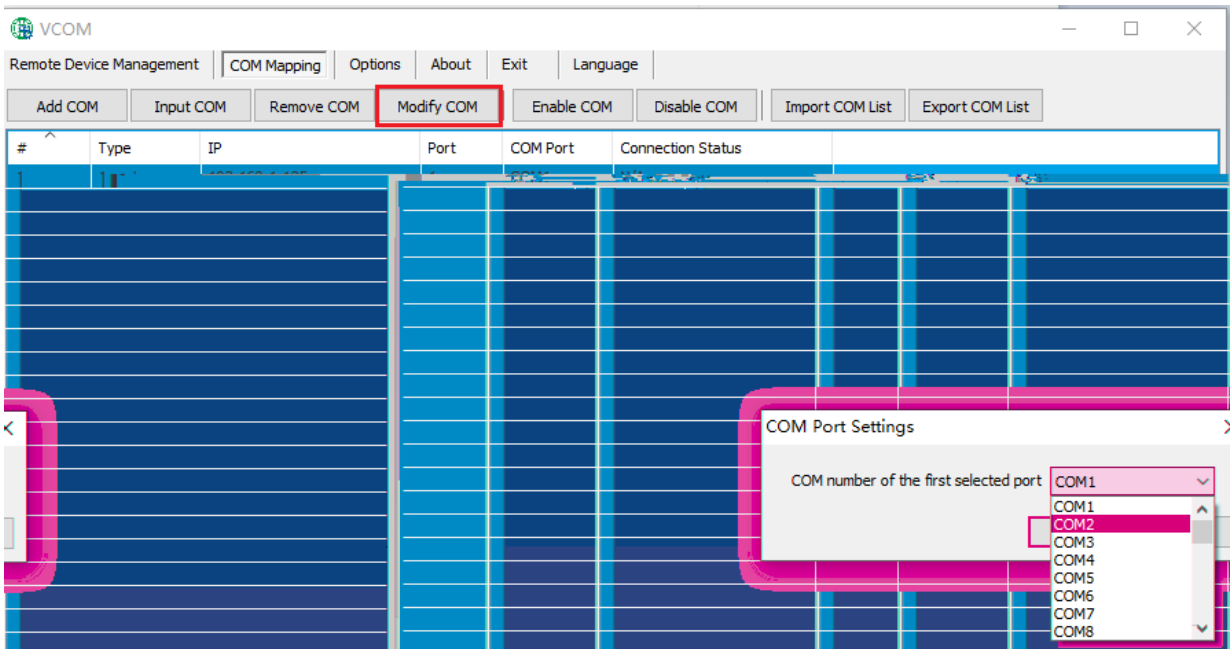
" COM1"

Port1

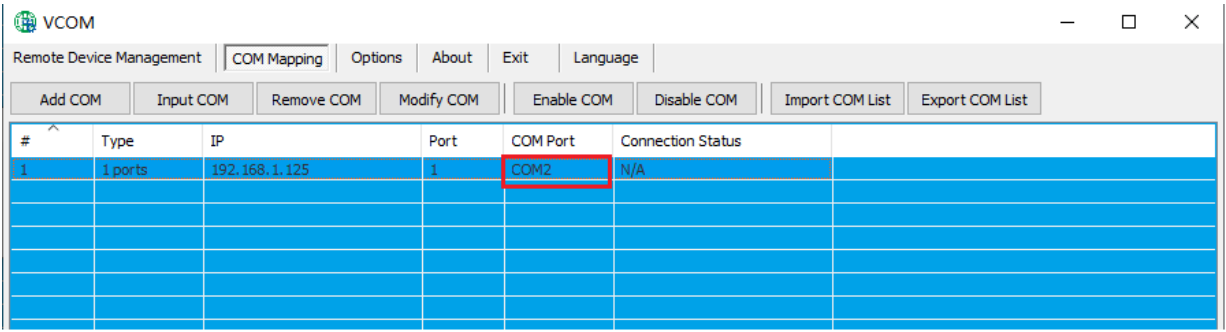
" COM1"

" COM2",

12



11

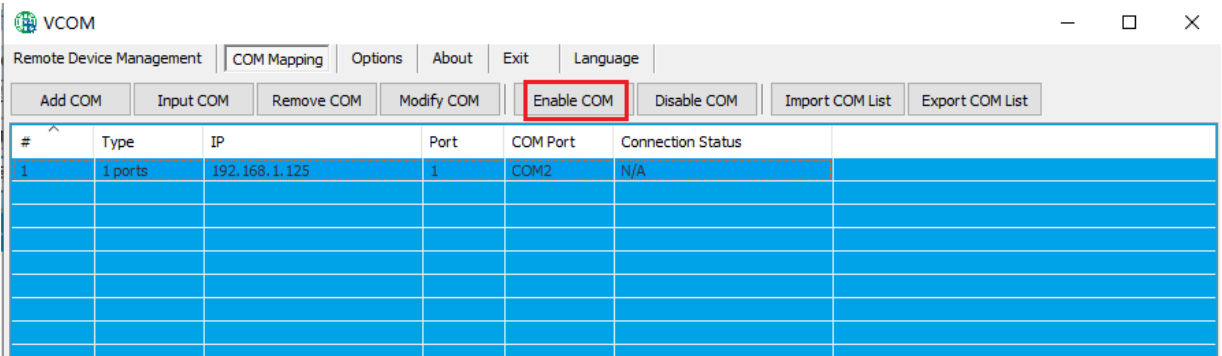


12

4

" VCOM"

13

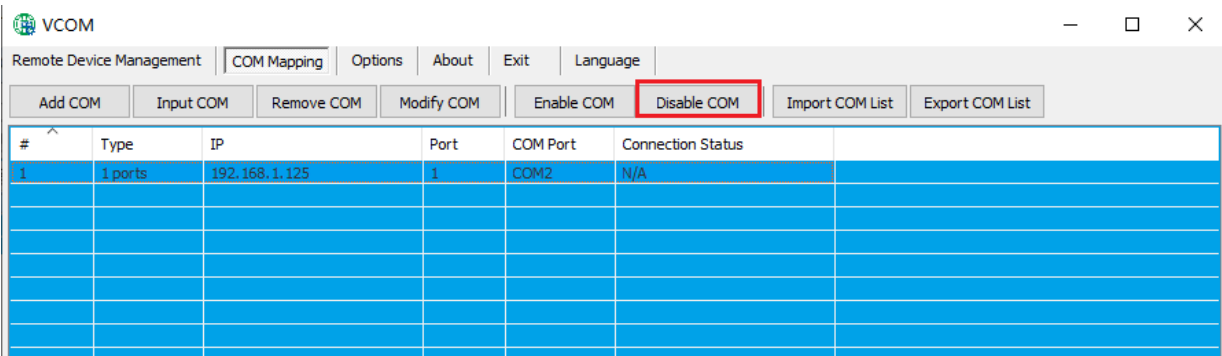


13

5

" VCOM"

14



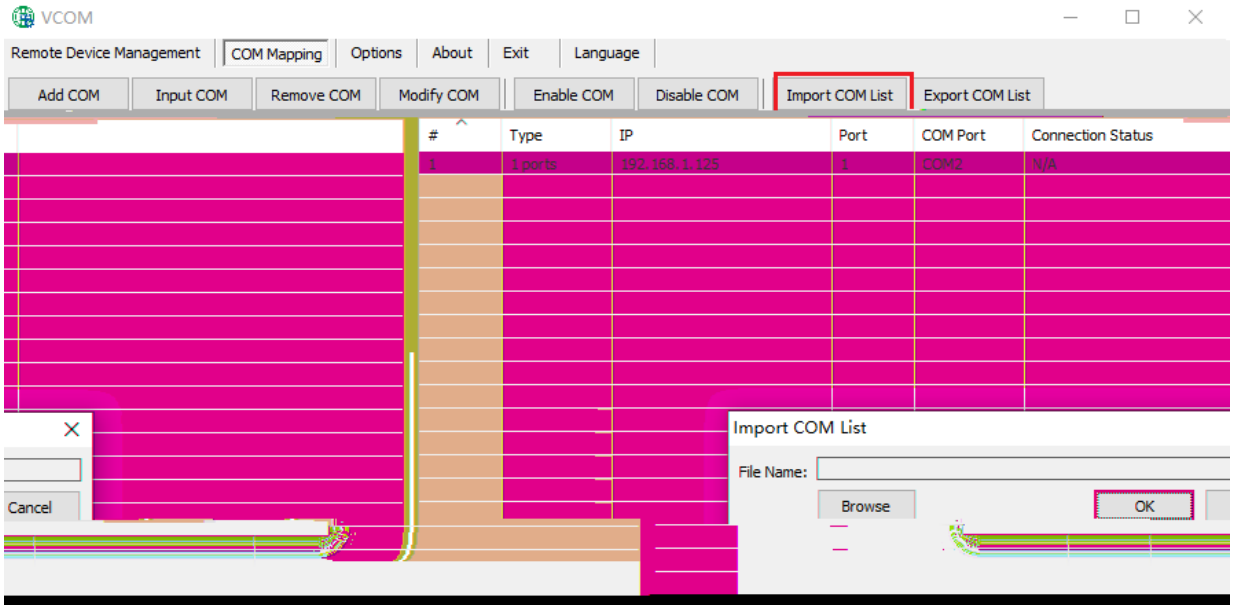
14

6

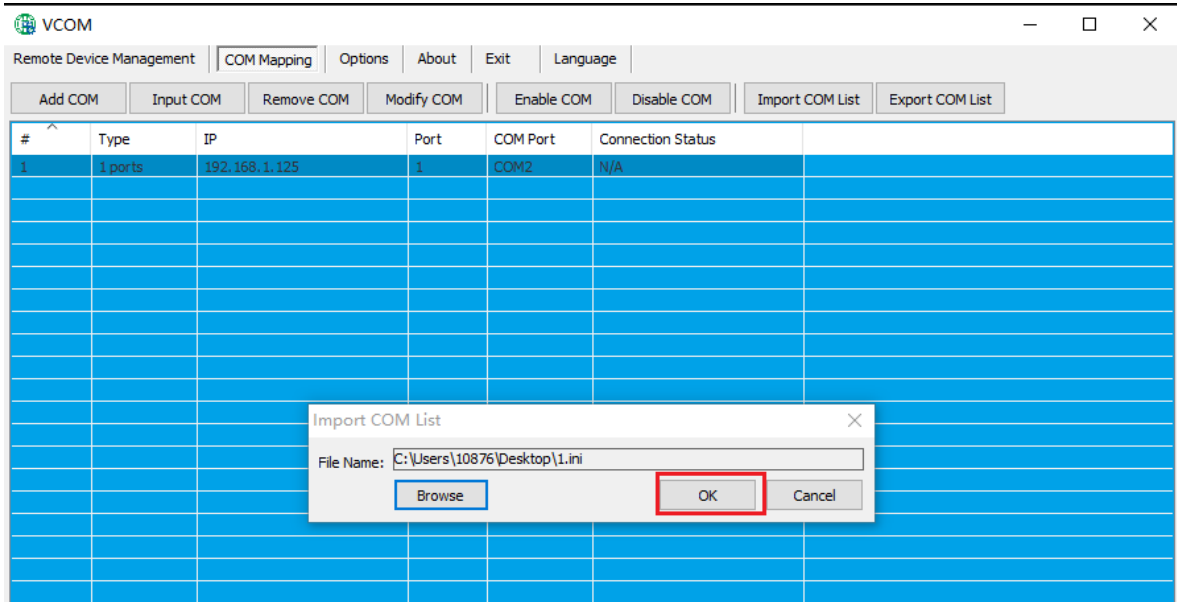
" VCOM"

16

15



15



16

7

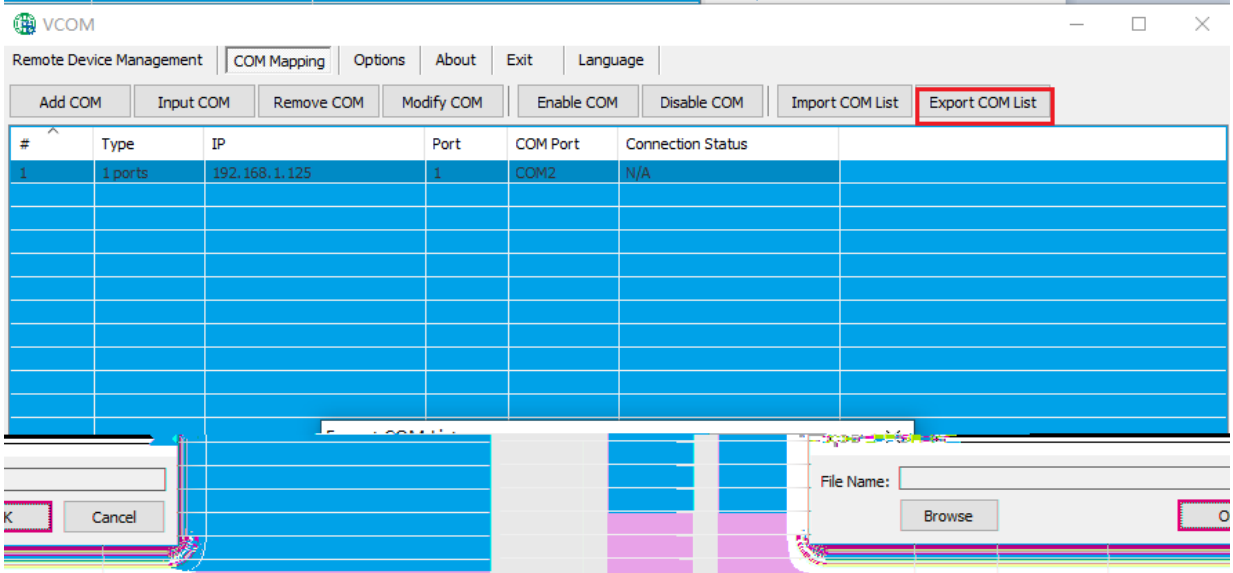
" VCOM"

" " " "

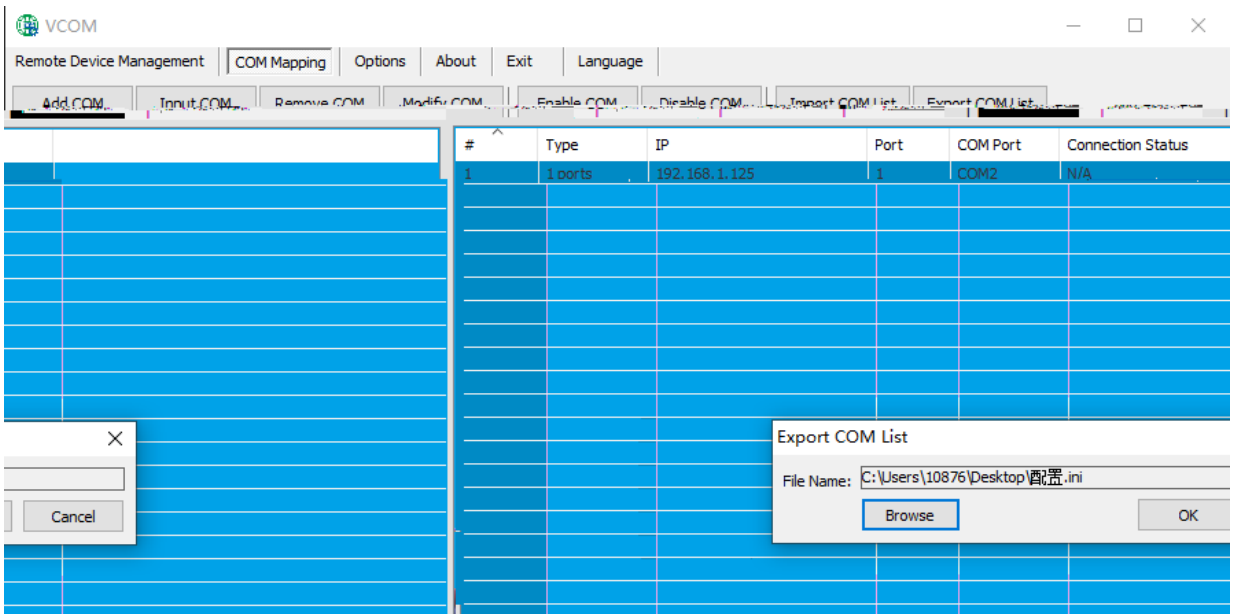
17

18

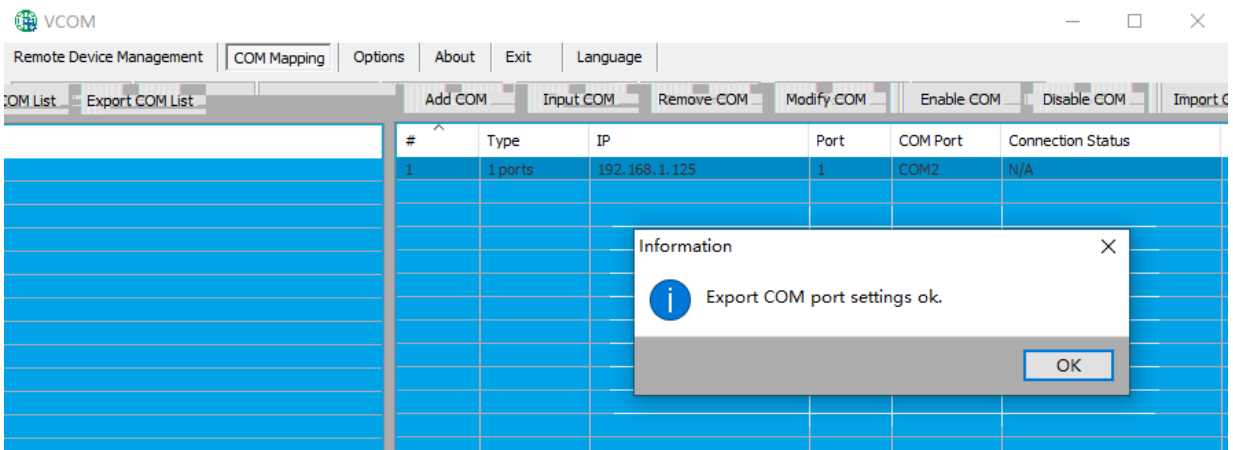
19



17



18

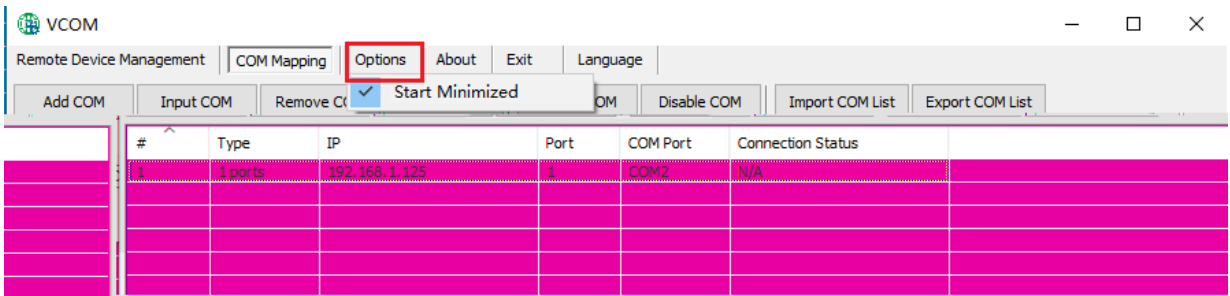


19

c

VCOM

20

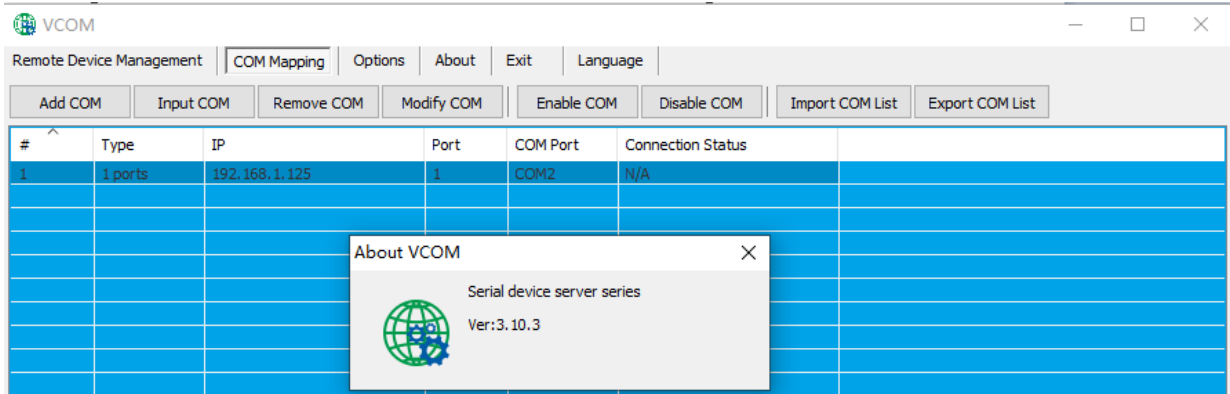


20

d

" About"

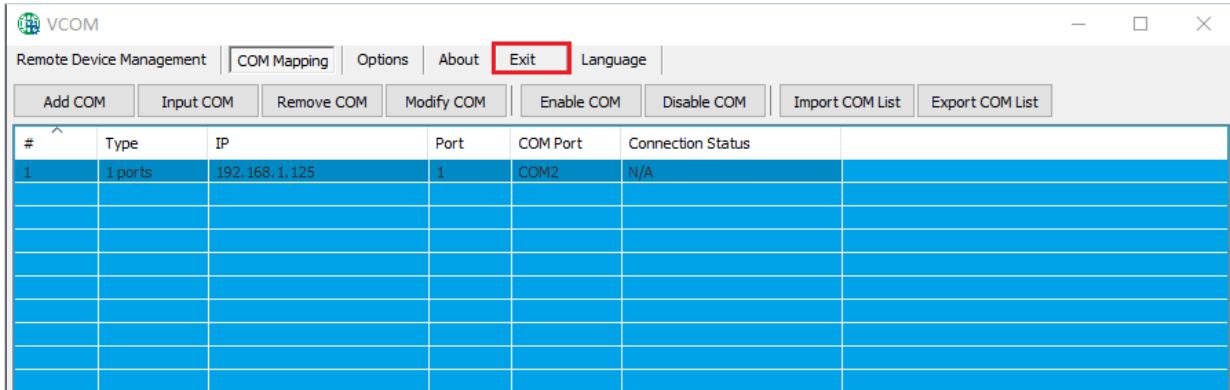
21



21

e

" Exit"



f

22

